

View from balcony



39 Marina Crescent Gymea Bay NSW

5 🛏 2 🚿 4 🚗

Situated in one of Gymea Bay's prime locations resides this full brick family home which is elevated above the street and enjoys a peaceful cul-de-sac setting whilst it captures stunning bay views from its multiple living areas and vast entertainer's terrace.

Generous in size with an appealing North East aspect this home is perfect for those who love to entertain and it sits within the Kirrawee High catchment with a stroll to the bus and local cafe's.

- * Striking water views of Gymea Bay & Grays Point
- * Spacious and multiple living areas with wet bar
- * Entertainers' kitchen with stone bench tops & plenty of storage

[For full version visit the website](https://www.jreproperty.com.au)

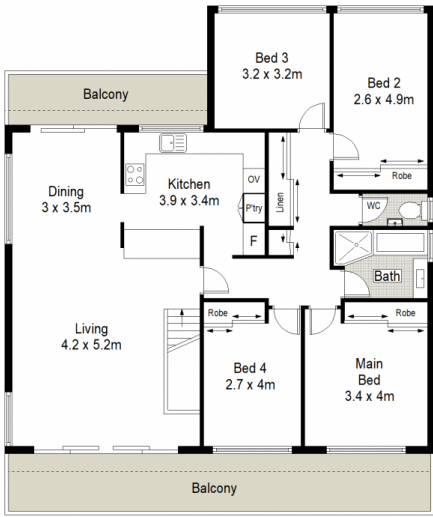
Type : House
Price : \$ 2,000,000
Land Size : 619.7 sqm
View : <https://www.jreproperty.com.au/sale/nsw/sutherland/gymea-bay/residential/house/7483046>



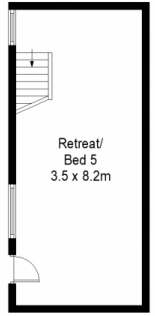
Luke Jeffree
02 9540 2222



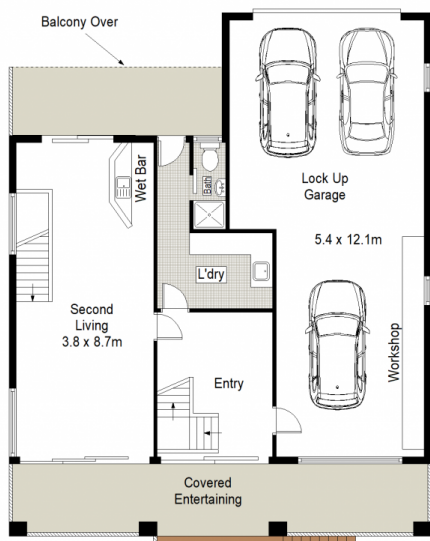
Belinda Sanders
02 9540 2222



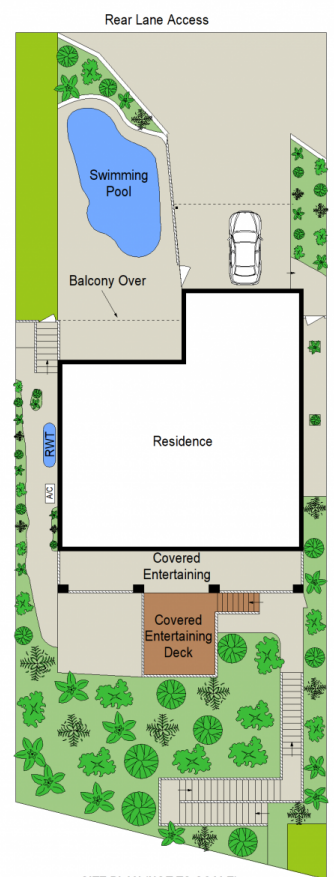
FIRST FLOOR



LOWER GROUND FLOOR



GROUND FLOOR



SITE PLAN (NOT TO SCALE)

CENTURY 21 Jeffree Real Estate



39 Marina Crescent, Gymea Bay

This diagram is for illustrative purpose only. All reasonable care has been taken in the preparation, but no warranty is given as to the accuracy of the information. This document does not constitute any part of any offer or contract. Dimensions shown are approximate only. Prospective purchasers must rely on their own enquiries.