



14/50-56 Talara Road Gymea NSW

2 1 1

This generously proportioned ground floor security apartment features a private and leafy aspect, located just moments to the vibrant heart of Gymea village shops, cafes & transport.

View : <https://www.jreproperty.com.au/lease/nsw/sutherland/gyemea/residential/apartment/7483068>

Features:

Large combined living & dining area opening onto sunny balcony with leafy outlook.

Galley style kitchen with abundance of storage space

Two generous bedrooms, both with built in wardrobes

Two bathrooms, main with bath tub and shower

Internal laundry with dryer, bonus third toilet in laundry

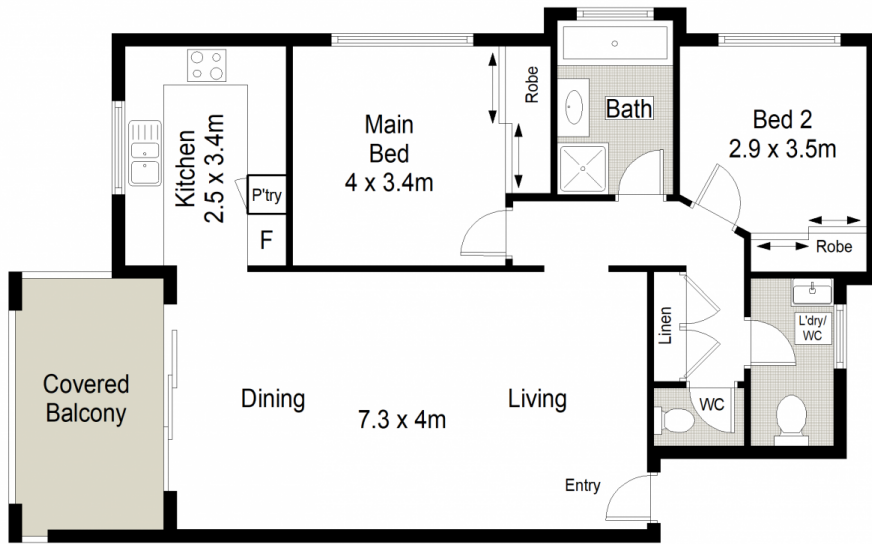
lock up garage, intercom, security building

12 month lease available now

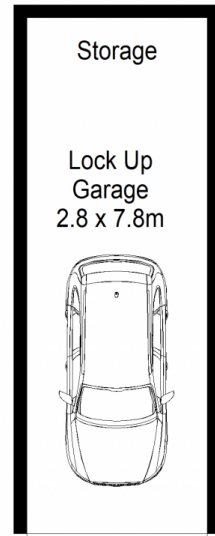
Sorry, no pets



Kimberly Williams
02 9540 2222



GROUND FLOOR



LEVEL B1

CENTURY 21 Jeffree Real Estate



14/50-56 Talara Road, Gymea

This diagram is for illustrative purpose only. All reasonable care has been taken in the preparation, but no warranty is given as to the accuracy of the information. This document does not constitute any part of any offer or contract. Dimensions shown are approximate only. Prospective purchasers must rely on their own enquiries.