

12/11-15 Kiara Road Miranda NSW

2 1 1

Conveniently set with a quick and easy stroll to a host of fantastic amenities that Miranda has to offer, this east facing apartment offers the perfect entry point or investment into a sought after locale. Light filled throughout but in need of some renovations this apartment is ready for your personal touch as you upgrade and reap the rewards.

Type : Unit
Price : \$ 520,000
View : <https://www.jreproperty.com.au/sale/nsw/sutherland/miranda/residential/unit/7483386>

- * Generous open plan lounge & dining with gas outlet
- * Original kitchen & internal laundry
- * Two well-proportioned bedrooms
- * East facing balcony with leafy outlook
- * Single lock up garage with extra storage
- * Great for first home buyers or investors

Rates Per Quarter (approx)

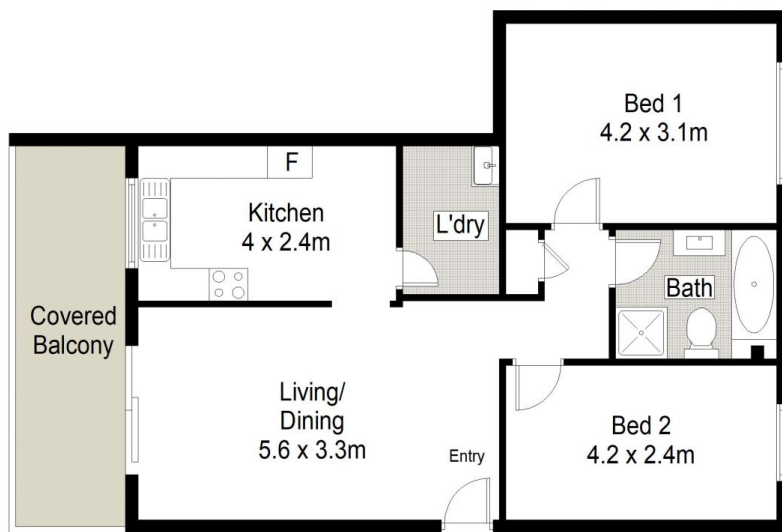


Luke Jeffree
02 9540 2222

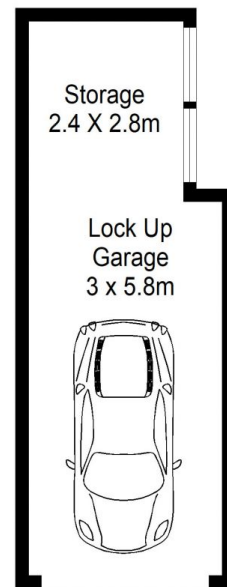


Belinda Sanders
02 9540 2222

[For full version visit the website](https://www.jreproperty.com.au)



LEVEL ONE



GROUND FLOOR

CENTURY 21 Jeffree Real Estate



12/11-15 Kiara Road, Miranda

This diagram is for illustrative purpose only. All reasonable care has been taken in the preparation, but no warranty is given as to the accuracy of the information. This document does not constitute any part of any offer or contract. Dimensions shown are approximate only. Prospective purchasers must rely on their own enquiries.