



85 Dominic Street Burraneer NSW

5 3 2

Perfectly positioned in a location most of us have always been envious of. This family size home boasts a functional open plan lounge/dining area plus additional front family room. Spacious kitchen with gas cook top, modern bathroom downstairs plus main bathroom upstairs. Main bedroom enjoys an ensuite, walk-in-robe, balcony & park views across of the road. Magnificent flat north facing backyard boasts a beautiful private in-ground pool & plenty of grassed area for the kids to kick a ball around. Double length carport plus study complete this great home. Highly motivated vendors encourage all genuine buyers to take advantage of this great opportunity.

Type : House

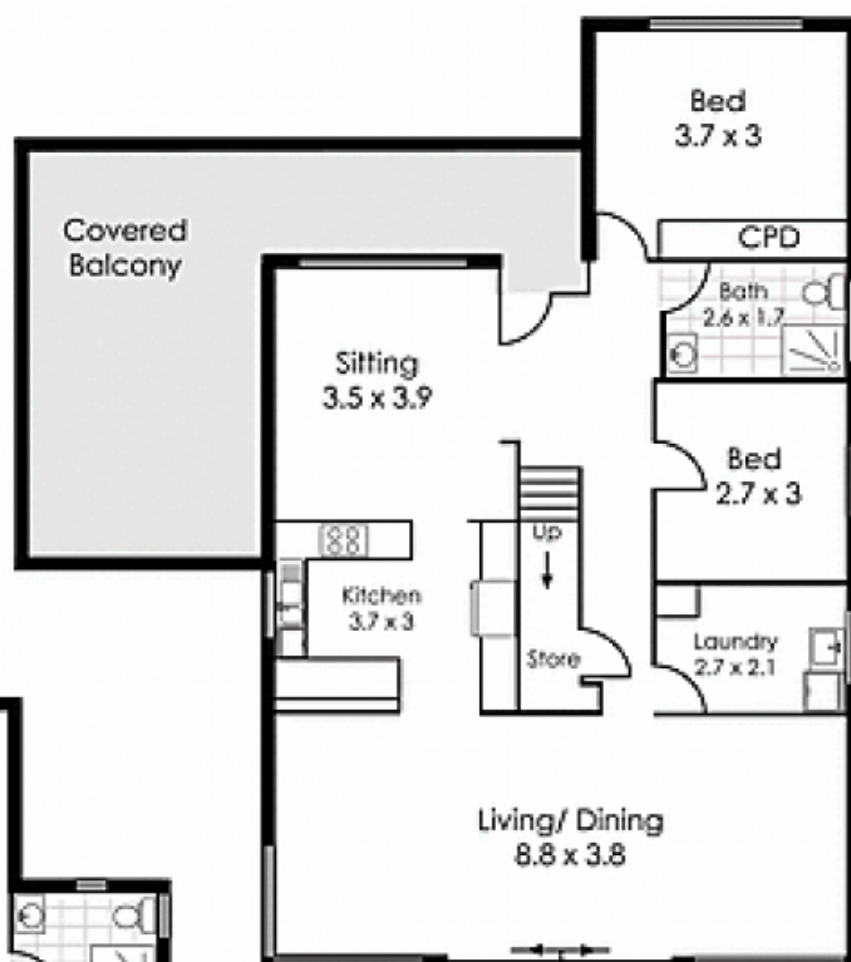
View : <https://www.jreproperty.com.au/sale/nsw/sutherland/burraneer/residential/house/7484890>



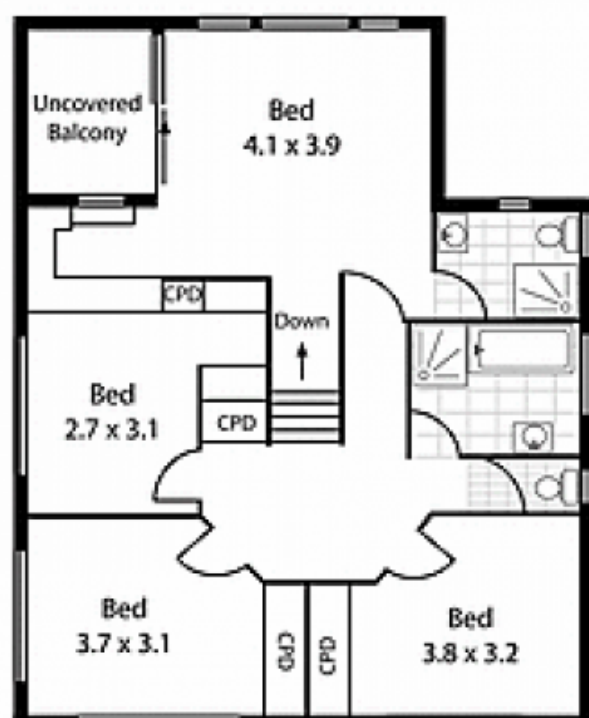
Luke Jeffree
02 9540 2222



Ground Floor



First Floor





Jeffree Real Estate

For more information please contact

Luke Jeffree

0414 623 754

lukej@jeffreerealestate.com.au

