



**44/2-8 Park Avenue Burwood NSW**

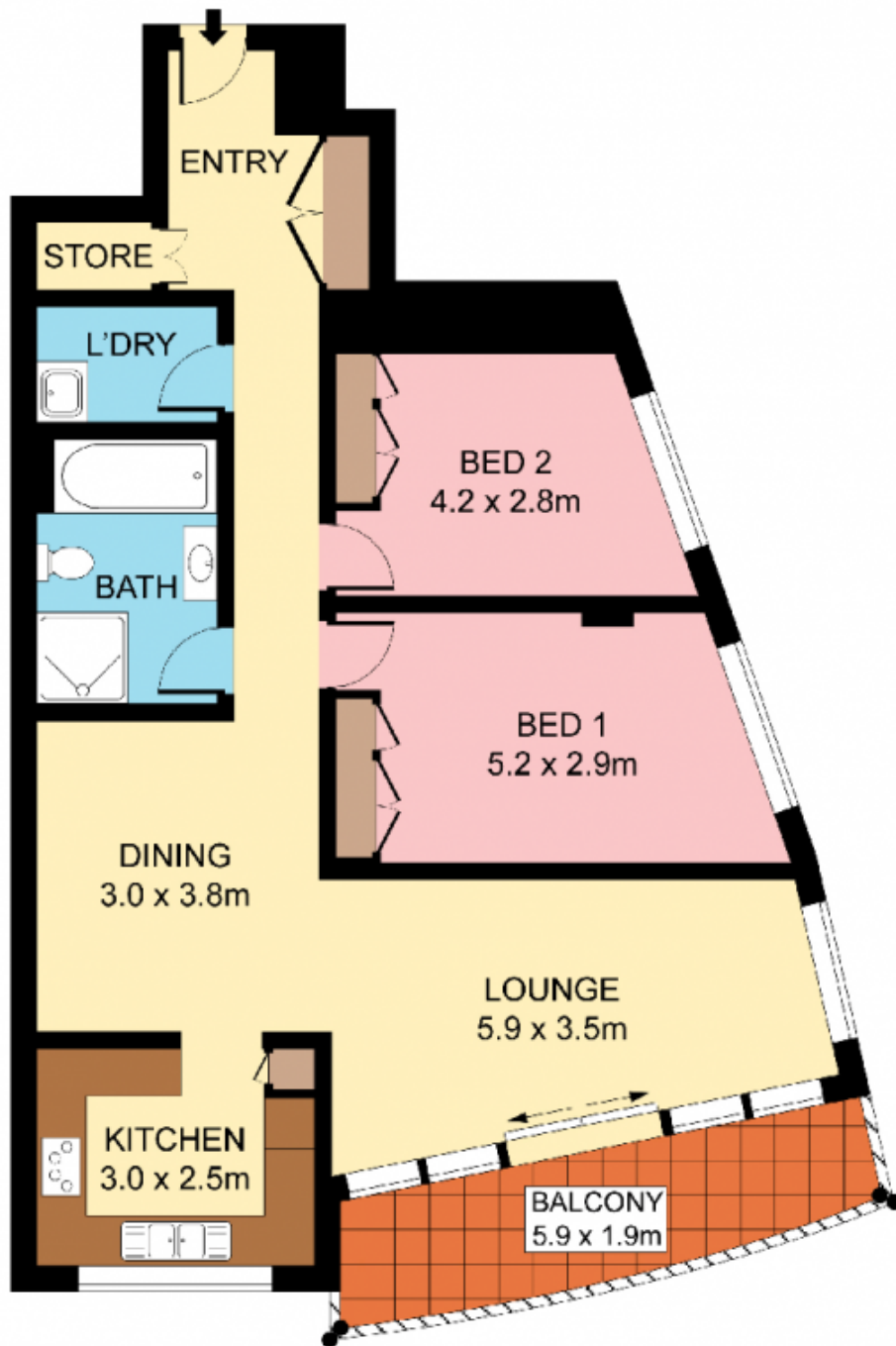
2 1 1

Offering a premium lifestyle address in Burwoods leafy heart, this generous 7th floor apartment overlooks acres of picturesque parklands and captures sweeping district views. Presented in very original condition, its ready for a stylish upgrade to transform into a contemporary abode set just metres to Burwood Westfield, numerous eateries and rail.

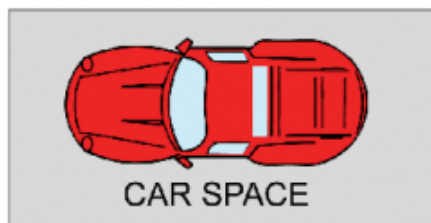
**Type** : Unit  
**Building Size** : 94 sqm  
**Land Size** : 110 sqm  
**View** : <https://www.jreproperty.com.au/sale/nsw/inner-west/burwood/residential/unit/7484891>

- Perfect north aspect, filled with natural light
- Spacious living wrapped in glass, wide balcony
- Substantial original kitchen with striking views
- Two good sized bedrooms, BIRs, central bath
- Internal laundry, intercom, secure lock up garage
- Huge potential, perfect 1st home buyers/investor

[For full version visit the website](#)



**LEVEL SEVEN**



**BASEMENT**



Plan shown for information purposes only and do not constitute any legal document or title. They are subject to errors, omissions, inaccuracies and should not be used as a sole or accurate reference. It is advised to take strata title for own inquiries using independent sources.

44/2-8 PARK AVENUE

BURWOOD