



17/52 President Avenue Caringbah NSW

1 1 1

Substantial and stylish, this first-floor apartment with lift access presents expansive light filled interiors and is updated throughout for instant enjoyment. Enhanced by a perfect due north aspect it delivers further appeal with its close proximity to Caringbah shops, bus and rail

- * Timber floors, generous lounge and dining area
- * Renovated kitchen with gas appliances & stone benches
- * Spacious alfresco balcony, access from bedroom & lounge
- * Generous bedroom, built in wardrobes and split system A/C
- * Stylish bathroom, frameless shower screen & bath
- * Single security car space, security building, lift access

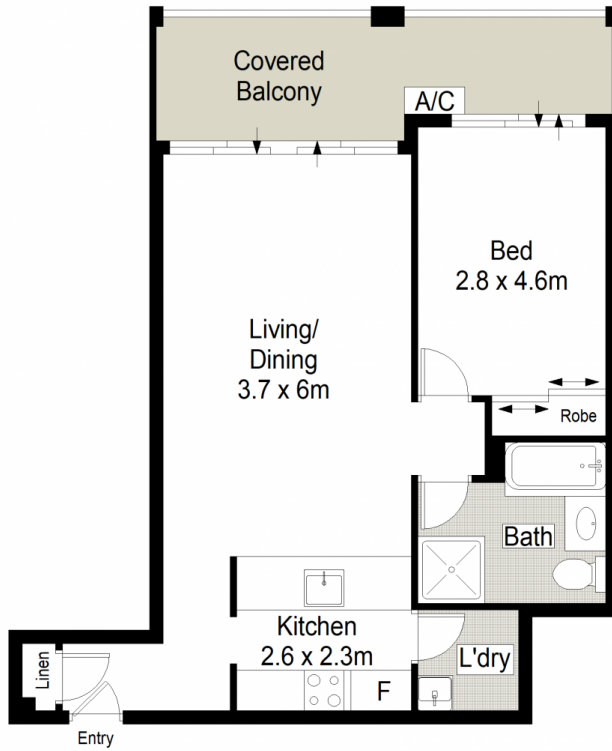
Type : Unit

View : <https://www.jreproperty.com.au/sale/nsw/sutherland/caringbah/residential/unit/7484923>

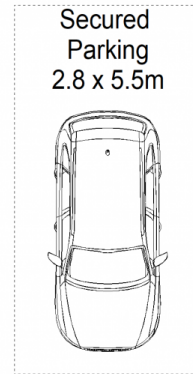


Trent Jeffree
02 9540 2222

[For full version visit the website](https://www.jreproperty.com.au)



LEVEL 1



BASEMENT

CENTURY 21. Jeffree
Real Estate



17/52 President Avenue, Caringbah

This diagram is for illustrative purpose only. All reasonable care has been taken in the preparation, but no warranty is given as to the accuracy of the information. This document does not constitute any part of any offer or contract. Dimensions shown are approximate only. Prospective purchasers must rely on their own enquiries.