



14/22-28 Premier Street GYMEA NSW

2 2 2

A lush, leafy setting in a beautifully maintained boutique complex adds tremendous appeal to this secure, immaculately presented tri-level townhouse.

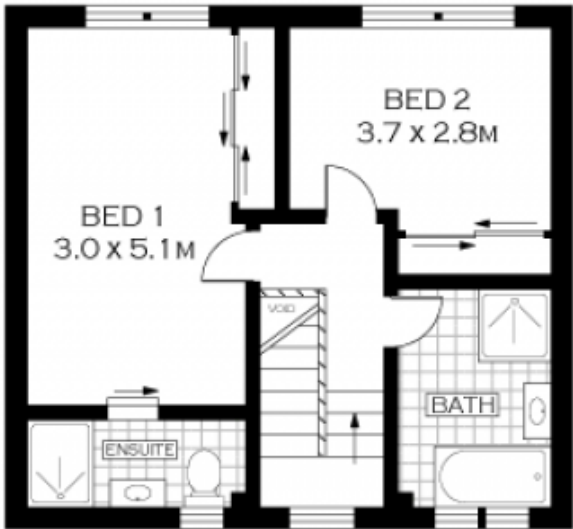
Type : Townhouse

View : <https://www.jreproperty.com.au/lease/nsw/sutherland/gyMEA/residential/townhouse/7487255>

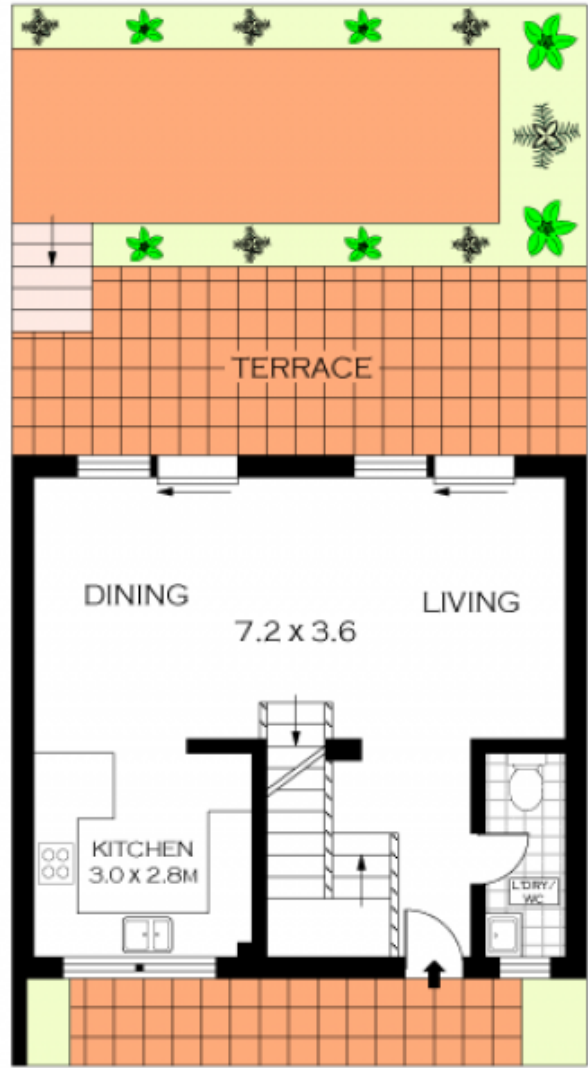
Featuring:

- Two good sized bedrooms with built in robes
- Modern kitchen, gas cooking and dishwasher
- Internal access to a massive double garage
- Open plan living & dining with timber floors
- Luxury of an entertainers alfresco courtyard
- Short stroll to GyMEA Village, transport & cafes

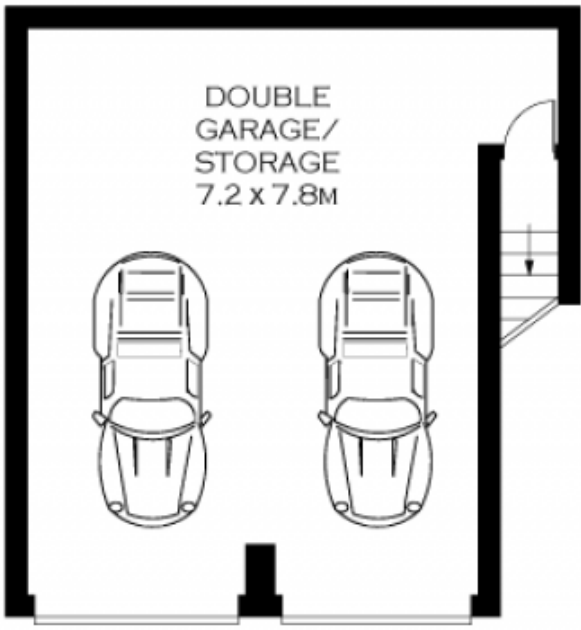
APPLY ONLINE by entering this link into your browser:
[t-app.com.au/c21gyMEA](https://www.jreproperty.com.au/lease/nsw/sutherland/gyMEA/residential/townhouse/7487255)



FIRST FLOOR



GROUND FLOOR



LOWER GROUND FLOOR



PLANS SHOWN ONLY INDICATIVE OF LAYOUT. DIMENSIONS ARE APPROXIMATE.
 Floor plans by www.realestatemarketingaustralia.com.au
 Ref. No. 9432



14/22-28 PREMIER STREET SOUTH

GYMEA

