



**10/4-8 Madeira Street SYLVANIA NSW**

**3** **2** **2**

This luxurious villa offers a private and low maintenance lifestyle. Positioned in an immaculate boutique complex with resort features including swimming pool, BBQ area, pontoon access and breathtaking northerly views of the Georges River and the City skyline.

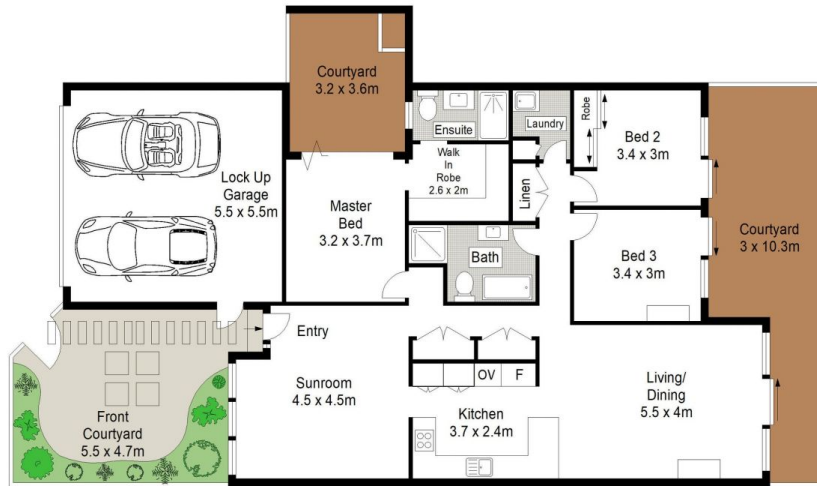
**Type** : Villa

**View** : <https://www.jreproperty.com.au/lease/nsw/sutherland/sylvania/residential/villa/7487430>

Featuring

- Stylish kitchen, ample storage, Miele appliances included fridge included
- Master bedroom with walk in robe and ensuite, second bedroom with wardrobe
- Convenience of an internal laundry, dryer included, remote controlled 2 car garage
- Separate living & dining area with modern vinyl flooring, reverse cycle air-conditioning

[For full version visit the website](https://www.jreproperty.com.au)



GROUND FLOOR

0 1 2 3 4 5 SCALE IN METRES.

Scale in metres. Indicative only. Dimensions are approximate. All information contained herein is gathered from sources we believe to be reliable. However we cannot guarantee its accuracy and interested persons should rely on their own enquiries.



10/4-8 Madeira Street, Sylvania

JRE PROPERTY