



7/23-25 Chapman Street GYMEA NSW

2 1 1

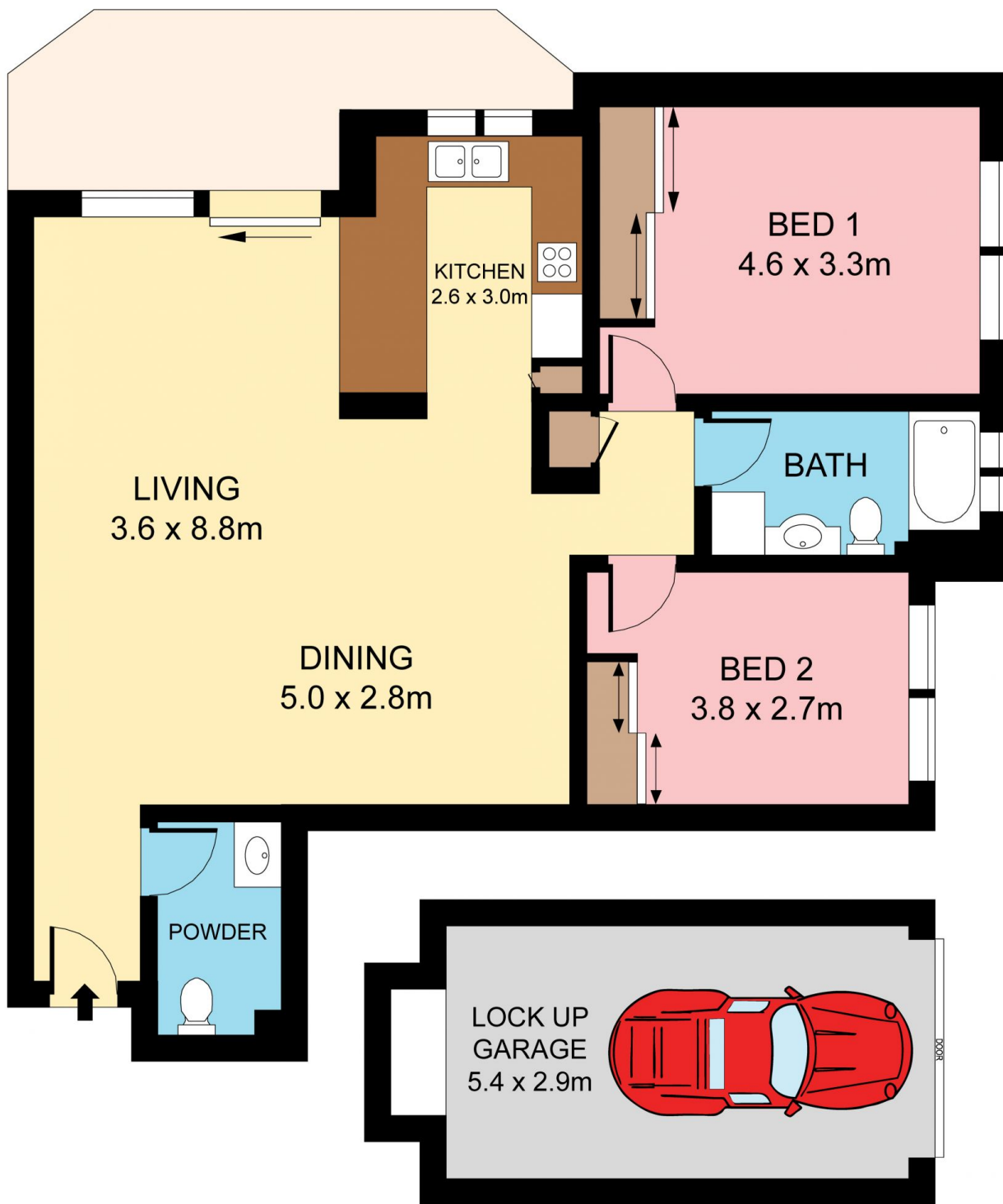
Offering the ultimate in convenient living, this stylishly appointed and generously proportioned security apartment presents a perfect address . North facing, light filled and benefiting from an open and leafy aspect, its just steps to the vibrant heart of Gymea village, restaurants, transport & schools.

View : <https://www.jreproperty.com.au/lease/nsw/sutherland/gymea/residential/unit/7487444>

Featuring:

- Ideal low maintenance timber flooring through out
- Spacious combined living opens to alfresco balcony
- Modern kitchen, stainless appliances & dishwasher
- Generous bedrooms, timber floors, built in wardrobes
- Convenience of Internal laundry with additional toilet
- Single lock up garage, secure intercom access building

APPLY ONLINE by entering this link into your browser:
<https://t-app.com.au/c21gymea>



Plans shown are for presentation purposes only and are not part of any legal document or title. They are subject to errors, omissions, inaccuracies and should not be used as a sole and accurate reference. Interested parties should make their own inquiries using independent sources.

7/23 CHAPMAN STREET

GYMEA