



106 Auburn Street KIRRAWEE NSW

6 **2** **2**

This substantial home is perfect for the large or extended family, positioned in a superb no-through enclave bordering national park, this substantial home offers exceptional family flexibility and comfort and a resort-style feel with its wide alfresco deck and pool. Enjoying a leafy outlook it's close to all amenities and within the Kirrawee High catchment.

Featuring:

- Upstairs and downstairs living areas + dining
- Alfresco deck overlooking glass wrapped pool
- Spacious kitchen offering ample storage space
- Six large bedrooms, spread across two stories
- Renovated bathrooms, upstairs w full sized bath
- Large internal laundry, single car garage, rear yard

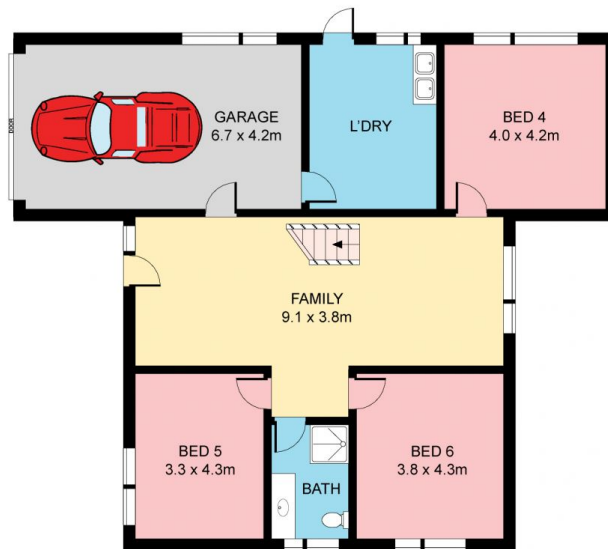
Type : House

View : <https://www.jreproperty.com.au/lease/nsw/sutherland/kirrawee/residential/house/7487470>

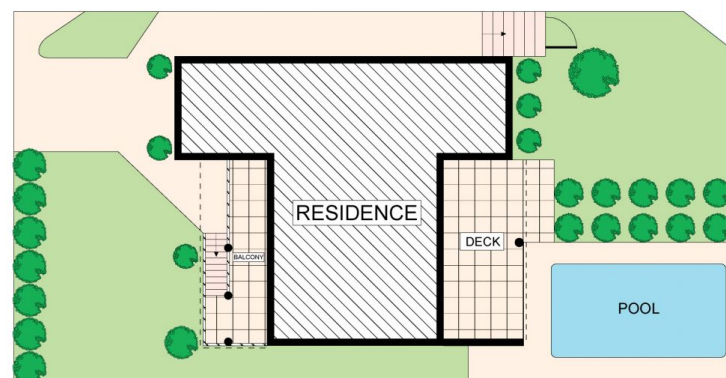
[For full version visit the website](https://www.jreproperty.com.au)



GROUND FLOOR



LOWER GROUND FLOOR



SITE PLAN (NOT TO SCALE)



Plans shown are for presentation purposes only and are not part of any legal document or title. They are subject to errors, omissions, inaccuracies and should not be used as a sole and accurate reference. Interested parties should make their own inquiries using independent sources.

106 AUBURN STREET

KIRRAWEE

