



**29/10-14 Warburton Street GYMEA NSW**

3 2 2

This top floor three bedroom sub-penthouse apartment offers immaculate interiors and boasts generous proportions with an abundance of natural light. Enjoying a favourable north aspect and with an extensive wrap around terrace encompassing majority of the apartment and with only one common wall, this property is perfect for those who value house size proportions and a low maintenance lifestyle that comes with apartment living. All whilst being positioned conveniently in the heart of vibrant GyMEA, close to transport and with all of GyMEA's cafe culture and boutique shops at your door step.

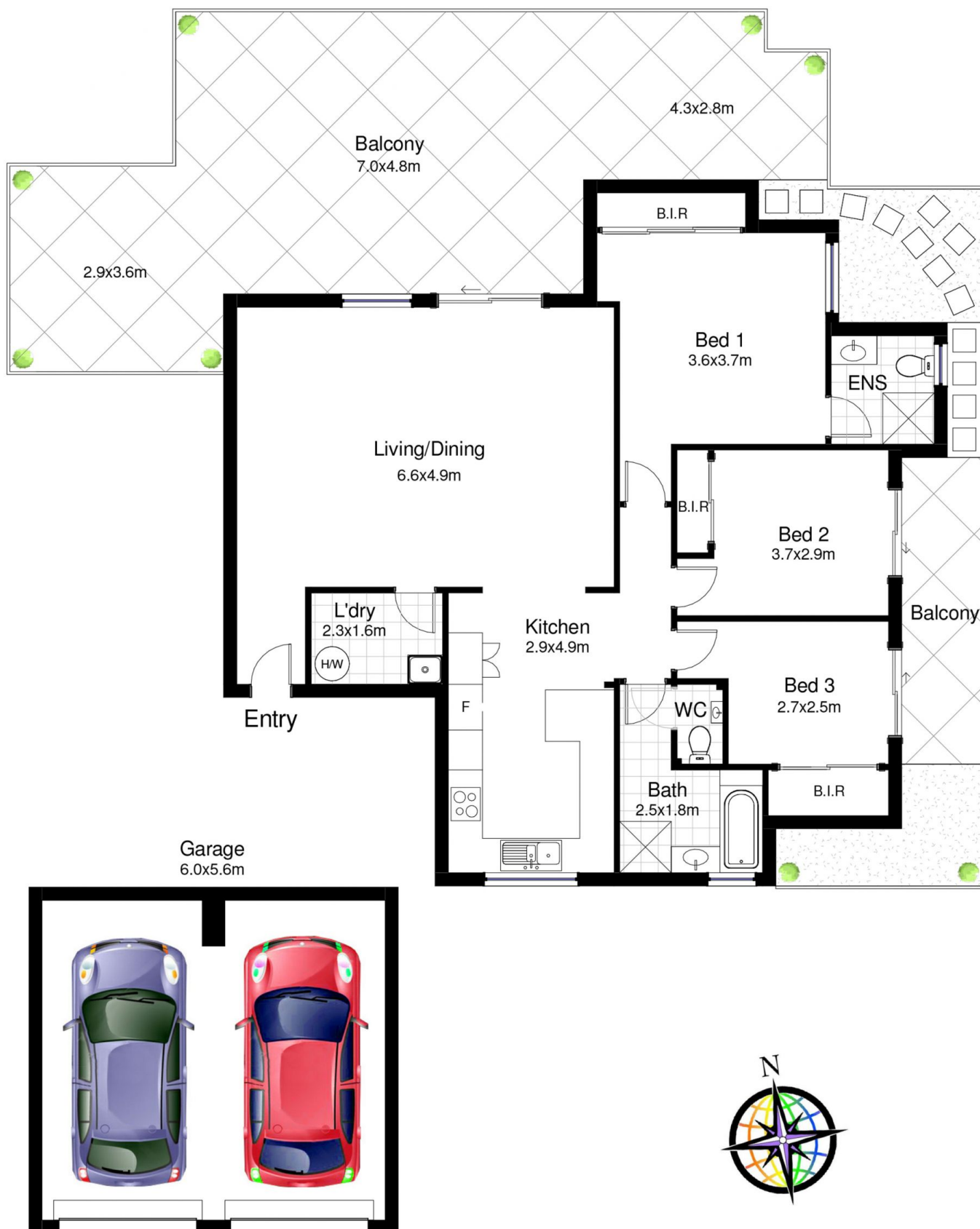
Featuring:

- 3 sun filled bedrooms all with built in wardrobes, main w/ ensuite

[For full version visit the website](https://www.jreproperty.com.au/lease/nsw/sutherland/gymea/residential/apartment/7487522)

**Type** : Apartment

**View** : <https://www.jreproperty.com.au/lease/nsw/sutherland/gymea/residential/apartment/7487522>



## 29/10-14 Warburton Street, GyMEA

DISCLAIMER: This is for illustrative purposes only. All dimensions are approximate and it does not constitute part of any legal documents.