



**21/112-118 Port Hacking Road Sylvania NSW**

**3** **2** **1**

Generously proportioned throughout and peacefully situated in a well-maintained complex this townhouse offers an easy-care low maintenance lifestyle. Enjoying light filled interiors over two levels the accommodation provides all bedrooms upstairs, open plan living downstairs and boasting a private courtyard with a sunny northerly aspect and covered entertaining area to be enjoyed all year round.

Featuring:

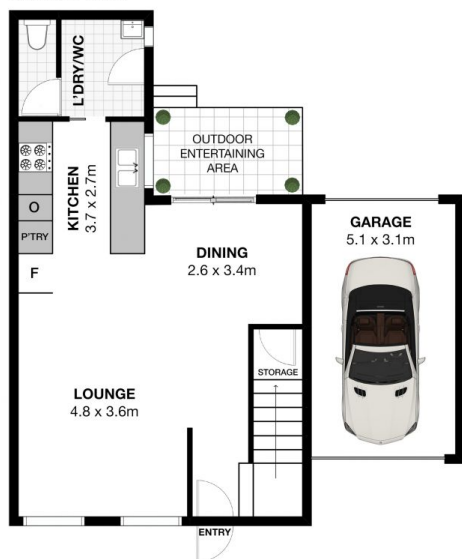
- Open plan living and dining area leading to the private sunny courtyard
- Tidy kitchen with breakfast bar, spacious laundry and powder room
- All bedrooms are upstairs, master bedroom is complete with ensuite

**Type** : Townhouse

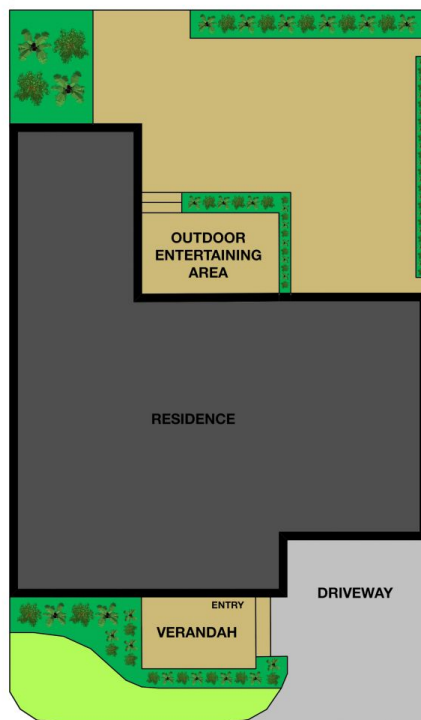
**View** : <https://www.jreproperty.com.au/lease/nsw/sutherland/sylvania/residential/townhouse/7487527>

[For full version visit the website](https://www.jreproperty.com.au)

GROUND FLOOR



SITEPLAN



UPPER FLOOR



## 21/112-118 Port Hacking Road, Miranda

This is for illustrative purposes only. All dimensions are approximations. These illustrations do not constitute part of any legal documents.

