

3/6-8 Moani Avenue GYMEA NSW

3 1 1

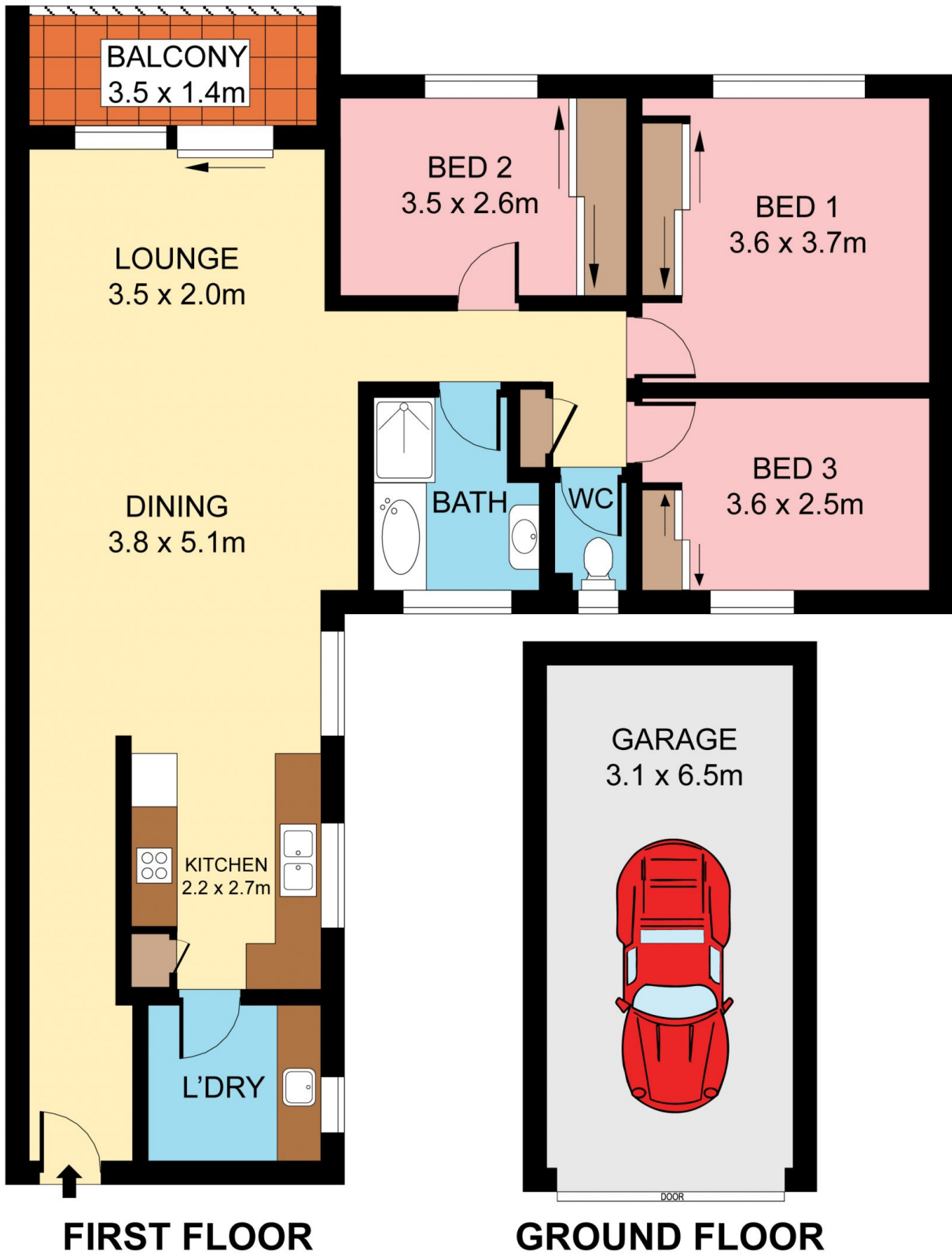
Set on the first floor, this private and secure block offers the ultimate in lifestyle and convenience. Situated in a quiet cul-de-sac just one minute walk from Gymea shopping village and train station.

Type : Unit
View : <https://www.jreproperty.com.au/lease/nsw/sutherland/gymea/residential/unit/7487540>

Featuring:

- All bedrooms with built-in robes, bright living and dining area
- Generous open plan design, living & dining area with floorboards
- Modern deluxe Caesarstone kitchen with stainless steel appliances
- Bonus of an internal laundry, updated bathroom w/ separate WC
- East facing balcony with leafy outlook, security intercom

[For full version visit the website](#)



Plans shown are for presentation purposes only and are not part of any legal document or title. They are subject to errors, omissions, inaccuracies and should not be used as a sole and accurate reference. Interested parties should make their own inquiries using independent sources.