



14/37-41 Premier Street GYMEA NSW

2  1  1 

Located minutes to the popular Gymea Village is this North/East facing first floor unit set within a manicured security complex. The open plan living area flows to a large covered balcony perfect for entertaining.

Type : Apartment

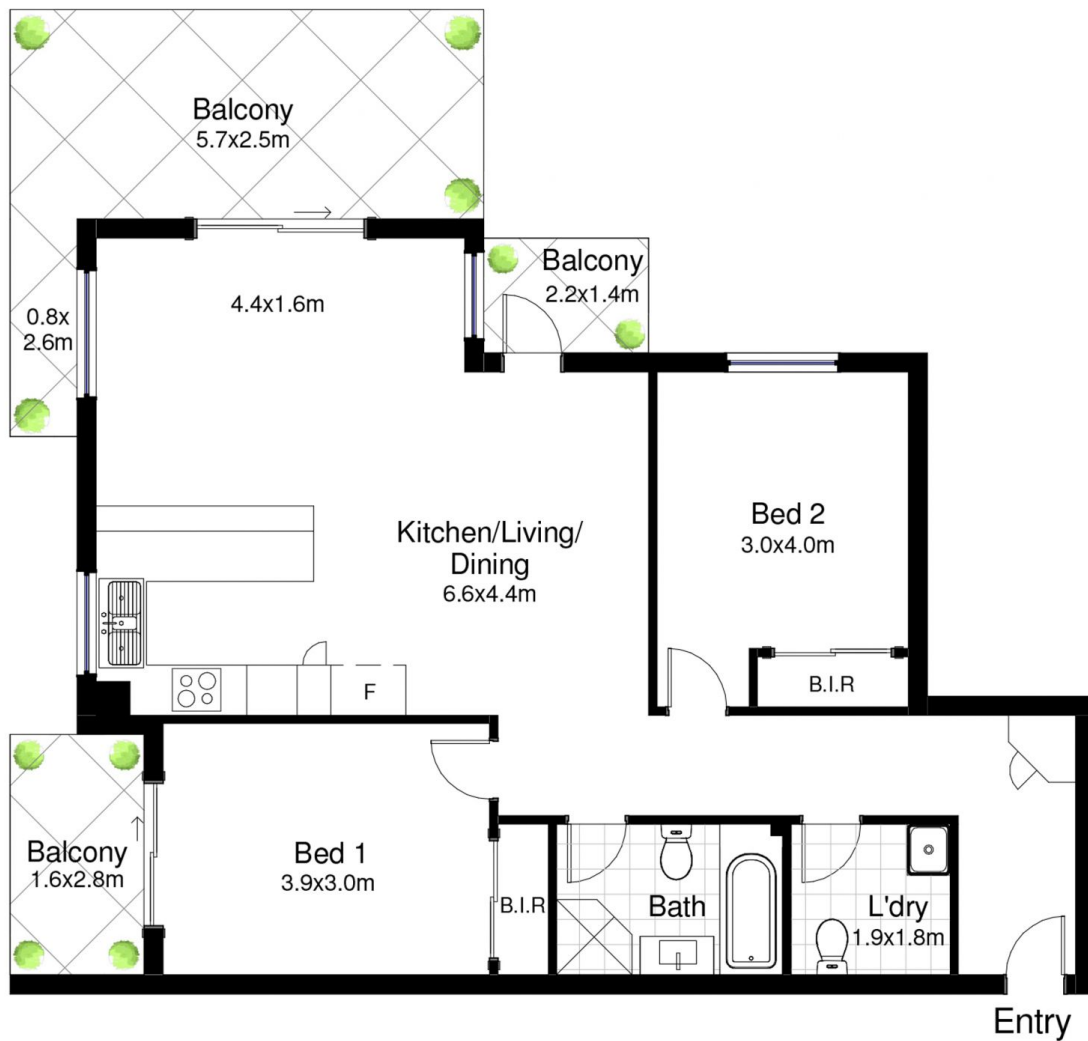
View : <https://www.jreproperty.com.au/lease/nsw/sutherland/gyMEA/residential/apartment/7487541>

Featuring

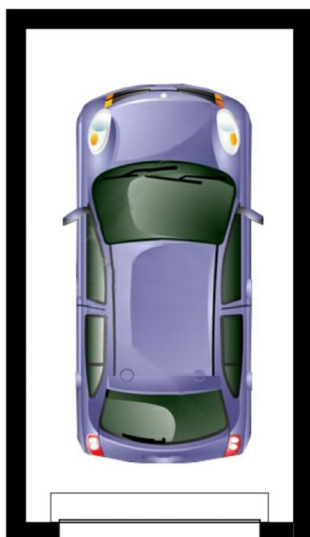
- Oversized living area with reverse cycle air con
- Spacious bedrooms, both with built-in wardrobes
- Open plan modern kitchen with Smeg appliances
- Floorboards throughout living area, internal laundry
- Single car garage plus additional storage cage
- Three balconies, lift access and security intercom

APPLY ONLINE by entering this link into your browser:
[t-app.com.au/c21gyMEA](https://www.jreproperty.com.au/lease/nsw/sutherland/gyMEA/residential/apartment/7487541)

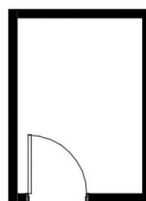
[For full version visit the website](https://www.jreproperty.com.au/lease/nsw/sutherland/gyMEA/residential/apartment/7487541)



Garage
3.2x5.9m



Storage
1.5x2.1m



14/37-41 Premier Street, Gymea

DISCLAIMER: This is for illustrative purposes only. All dimensions are approximate and it does not constitute part of any legal documents.