



5/1-9 Warburton Street GYMEA NSW

2 1 1

ACCESS VIA KINGSWAY

This 2 bedroom security apartment is exceptionally positioned only moments to Gymea village's boutique shops and diverse eateries, art gallery, rail, bus and local schools.

Featuring:

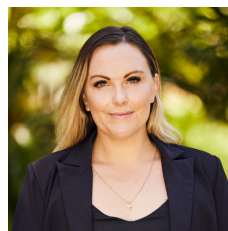
- Open plan living & dining opens to sunny balcony
- Generous size bedrooms and main with built-in robe
- Original bathroom with separate bath & shower
- Updated kitchen w/ s/s appliances, internal laundry
- Bonus lock-up garage in a well kept security complex

APPLY ONLINE by entering this link into your browser:

[For full version visit the website](https://www.jreproperty.com.au/lease/nsw/sutherland/gymea/residential/apartment/7487549)

Type : Apartment

View : <https://www.jreproperty.com.au/lease/nsw/sutherland/gymea/residential/apartment/7487549>



Natalie McHugh
02 9540 2222