






**10/2-6 Koorabel Avenue GYMEA NSW**

**3**  **2**  **2** 

Generously proportioned throughout this 3 bedroom apartment boasts light filled interiors, private top floor position with stunning views. The substantial floor plan accommodates seamless open plan indoor and outdoor living and is in the heart of Gymea with caf?'s shops and public transport all at your door.

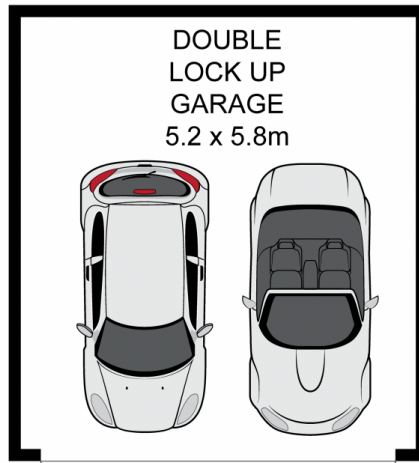
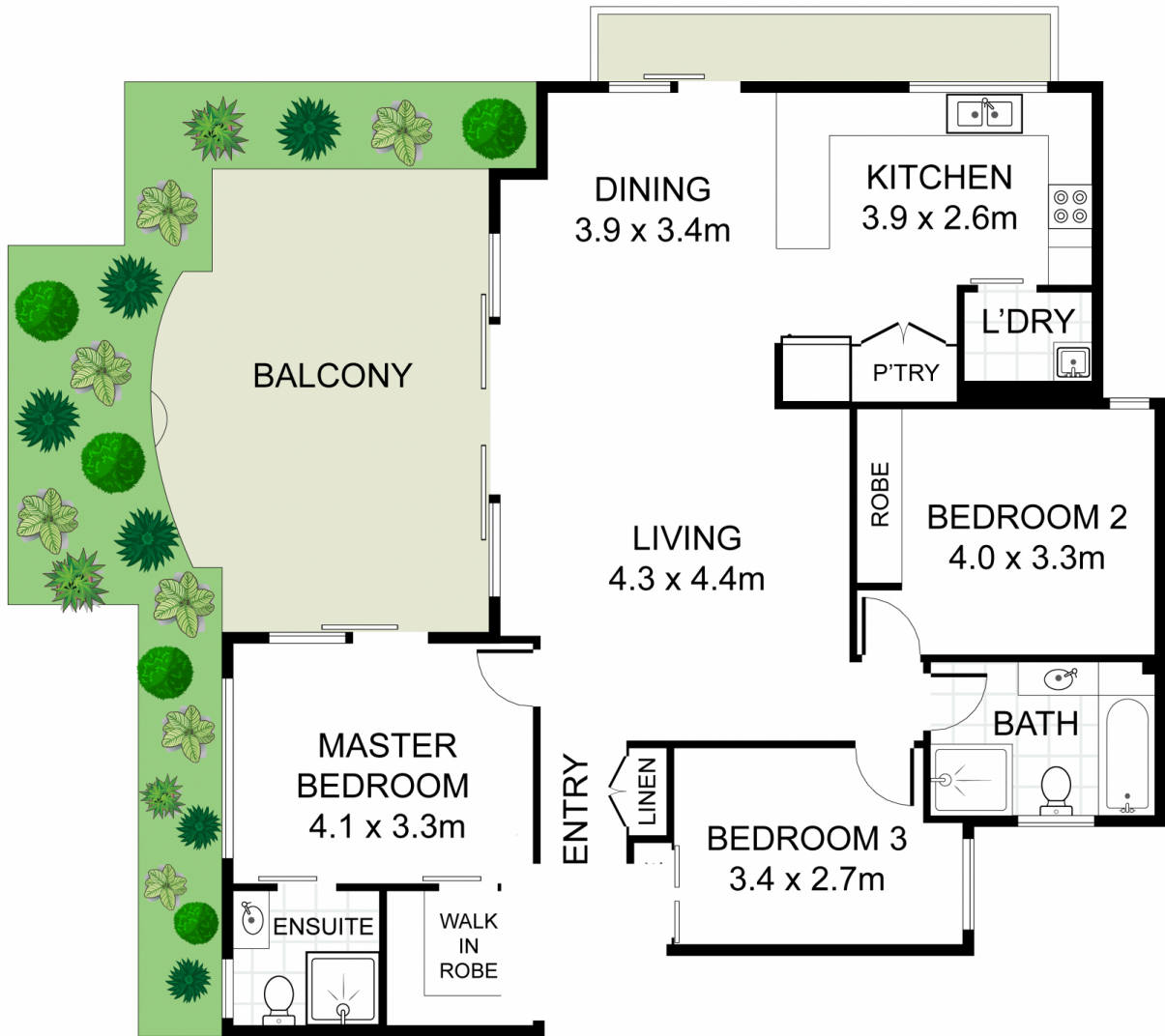
**Type** : Unit

**View** : <https://www.jreproperty.com.au/lease/nsw/sutherland/gymea/residential/unit/7487555>

Updated with new carpet, new blinds and freshly painted throughout.

- \* Spacious open plan living with sun drenched north facing entertainers balcony
- \* Great sized kitchen with plenty of bench space and storage options
- \* Three large bedrooms with ceiling fans, master with

[For full version visit the website](#)



10/2-6 Koorabel Avenue, Gymea

DISCLAIMER: PLANS SHOWN ARE FOR PRESENTATION PURPOSES AND ARE NOT PART OF ANY LEGAL DOCUMENT. ALL MEASUREMENTS AND FIGURES ARE APPROXIMATE.