



17 Anemone Place KIRRAWEE NSW

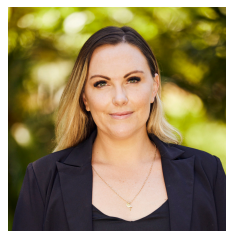
3 1 3

This fantastic 3 bedroom plus study home is located on the lower level of a private dwelling with separate access and yards and plenty of privacy. Located in a quiet Cul De Sac and backing onto the tranquil Oyster Gully creating peaceful living with a leafy outlook.

Type : House
View : <https://www.jreproperty.com.au/lease/nsw/sutherland/kirrawee/residential/house/7487576>

AIR CONDITIONING DOES NOT WORK & NOT INCLUDED

- Three bedrooms with mirrored built in wardrobes plus a large study/kids play room
- Large modern bathroom with both bath and shower plus extra powder room in the laundry
- Oversize kitchen with plenty of space for a large dining table



Natalie McHugh
02 9540 2222

[For full version visit the website](https://www.jreproperty.com.au)