



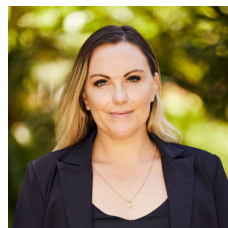
3/712 Kingsway GYMEA NSW

3 2 2

Boasting grand proportions and high end finished throughout, this immaculate 3 bedroom, 2.5 bathroom townhouse boasts an expansive floor plan with two separate living areas, two private courtyards and split level bedrooms located in a boutique modern development. Offering the ideal low maintenance lifestyle in a convenient central location. Stroll to Gymea Village, transport, schools & restaurants.

View : <https://www.jreproperty.com.au/lease/nsw/sutherland/gymea/residential/townhouse/7487890>

- Two spacious living area flow over split level floor plan with timber flooring
- Entertainers kitchen with Smeg appliances high end finishes & breakfast bar
- 3 large bedrooms, all with built ins, main with walk in wardrobe and ensuite
- Quality bathrooms with top end finishes, plus a guest toilet downstairs



Natalie McHugh
02 9540 2222