



7 Ingrid Road KAREELA NSW

3 2 2

Located in a desirable tree lined street, sits this North facing expansive family home with two separate, air conditioned living areas, 3 double bedrooms and a private, leafy and sun drenched backyard. Located in a quiet suburb, close to shops, restaurants and cafes, this family home is not one to miss.

Featuring

- Kitchen with ample storage and second kitchenette
- Two large bathrooms, one featuring oversized spa bath
- Double sized bedrooms, all with built in robes
- Separate living areas on each level of the home
- Sun drenched North facing balcony and a leafy backyard
- Pets may be considered upon application

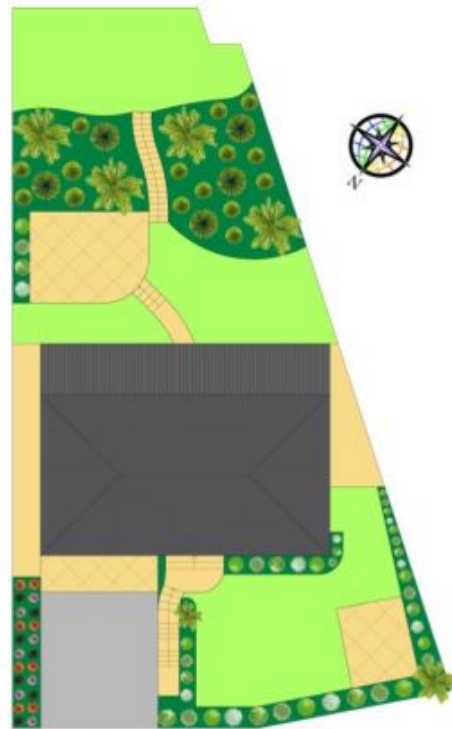
Type : House

View : <https://www.jreproperty.com.au/lease/nsw/sutherland/kareela/residential/house/7487903>



Natalie McHugh
02 9540 2222

[For full version visit the website](https://www.jreproperty.com.au)



7 Ingrid Road, Kareela

DISCLAIMER: This is for illustrative purposes only. All dimensions are approximate and it does not constitute part of any legal documents.