



**3 Buangi Place GYMEA BAY NSW**

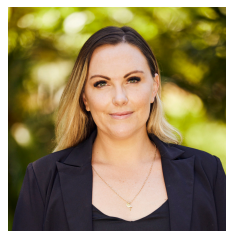
3 1 1

This pet and family friendly home situated in a quiet cul-de-sac is available from the 23rd May and will be open for inspection on Saturday 21st May. Located in a sought after area of Gymea Bay close to parks, schools, shops and transport. Offering a large and secure yard, 3 bedrooms with built in wardrobes, 1.5 bathrooms, air conditioning, timber floor boards and light and bright interiors.

- Light filled and air conditioned living room with floor boards throughout
- Spacious separate dining opening onto entertainers undercover patio
- Kitchen with ample bench and cupboard space overlooking the backyard

**Type** : House

**View** : <https://www.jreproperty.com.au/lease/nsw/sutherland-and-gyMEA-bay/residential/house/7487932>



**Natalie McHugh**  
**02 9540 2222**

[For full version visit the website](https://www.jreproperty.com.au)