

6 Flat Rock Road GYMEA BAY NSW

5 🏠 3 🚗 2 🚗

Sensational family home perfectly positioned, whilst dominating Gymea Bays most prized position & outlook. Boasting a highly sought after north facing backyard complete with resort style in-ground pool plus adjoining outdoor entertaining area along with grassed areas for the kids to enjoy. Functional floor plan of this double storey home ensures appreciation for various aged families. Downstairs offers a great size modern kitchen, open plan lounge & dining plus bedroom/rumpus plus a full bathroom with spa bath. Wonder up the appealing stair case to another great size living area & very generous size balconies all of which enjoy great water views. Another bathroom & 4 bedrooms including main with en-suite & balcony access. Highly motivated vendors encourage your inspection of this rare offering in a magnificent location.

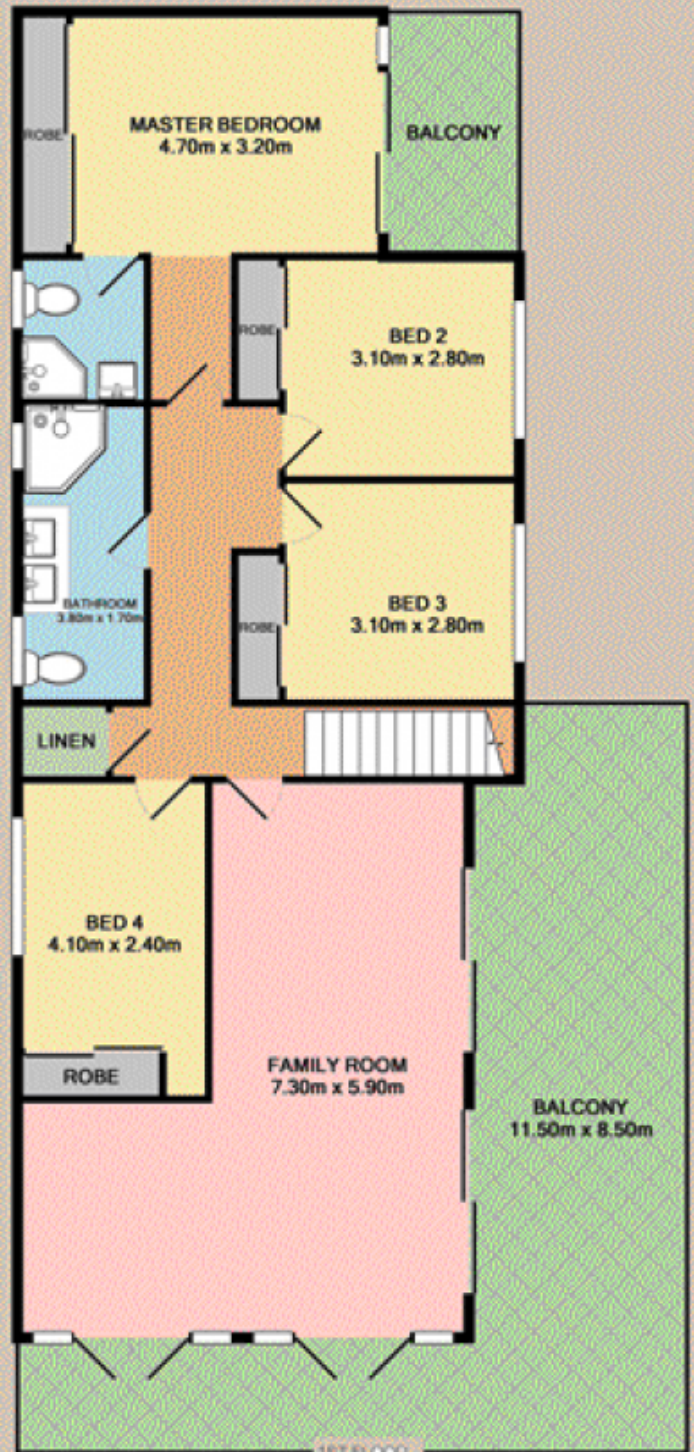
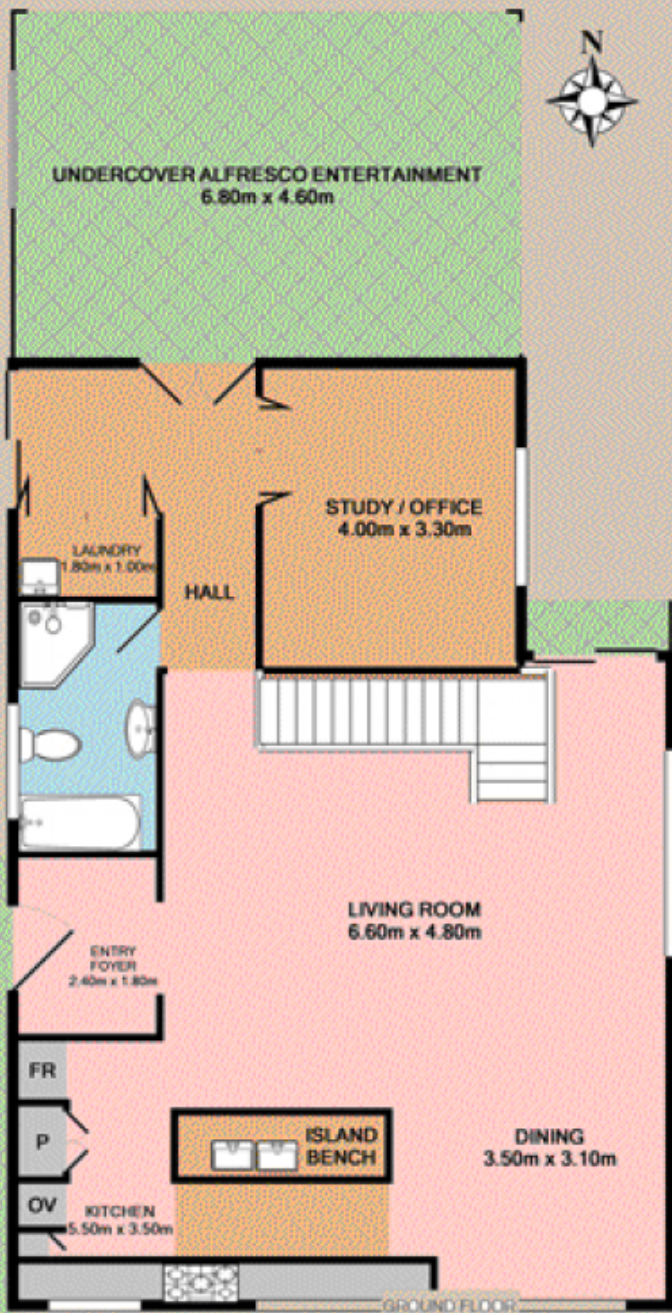
[For full version visit the website](https://www.jreproperty.com.au/sale/nsw/sutherland-gyMEA-bay/residential/house/7488139)

Type : House

View : <https://www.jreproperty.com.au/sale/nsw/sutherland-gyMEA-bay/residential/house/7488139>



Luke Jeffree
02 9540 2222



ALL MEASUREMENTS ARE APPROXIMATE

Whilst every attempt has been made to ensure the accuracy of the floor plan contained here, measurements of doors, windows, rooms and any other items are approximate and no responsibility is taken for any error, omission, or misstatement. This plan is for illustrative purposes only and should be used as such by any prospective purchaser. The services, systems and appliances shown have not been tested and no guarantee as to their operability or efficiency can be given. Marked fireplaces may be inactive. Rooms with cupboards and wardrobes are measured wall to wall and usually exclude wardrobe and cupboard measurements.