



5 Coopernook Avenue GYMEA BAY NSW

4 3 3

A stunning combination of inspiring aesthetics, extremely generous proportions & idyllic positioning is now on offer for you to purchase. Perfectly suited for any size & growing families. Living areas are in abundance comprising of a massive combined lounge/dining room, family room, plus a sensational media room escape. Tastefully renovated bathroom and a terrific entertainers size kitchen, which enjoys a peaceful distant & private outlook. The alfresco entertainment area overlooks the beautifully landscaped and grassed backyard, plus a resort style in-ground pool. Parents retreat complete with en-suite & great wardrobe space. Oversize double lock up garage ensures that this is the absolute family package!

Type : House

View : <https://www.jreproperty.com.au/sale/nsw/sutherland-gymea-bay/residential/house/7488150>



Luke Jeffree
02 9540 2222

ALL MEASUREMENTS ARE APPROXIMATE

Whilst every attempt has been to ensure the accuracy of the floor plan contained here, measurements of doors, windows, rooms and any other items are approximate only and no responsibility is taken for any error, omission, or mis statement. This plan is for illustrative purposes only and should be used as such by any prospective purchaser. The services, systems and appliances shown have not been tested and no guarantee as to their operability or efficiency can be given. Marked fireplaces may be inactive. Rooms with cupboards and wardrobes are measured wall to wall and may exclude wardrobe and cupboard measurements.

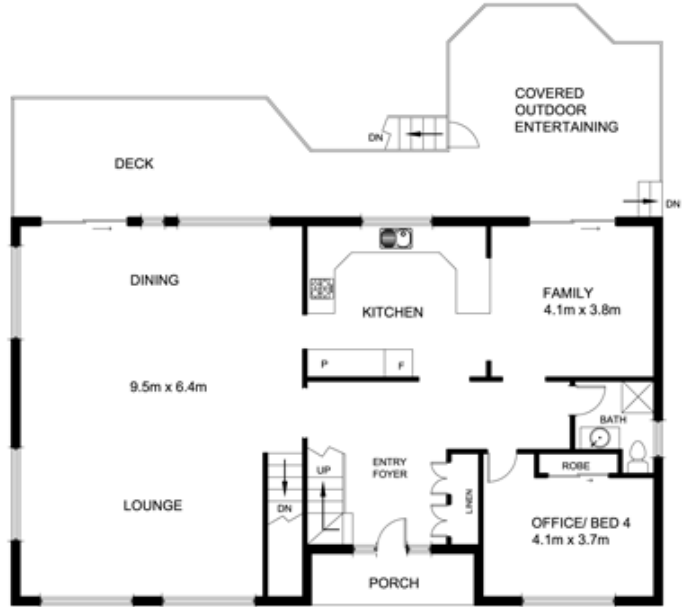
5 COOPERNOK AVENUE GYMEA BAY



UPPER FLOOR



LOWER FLOOR



GROUND FLOOR