

260 GyMEA Bay Road GYMEA BAY NSW

3 3 4

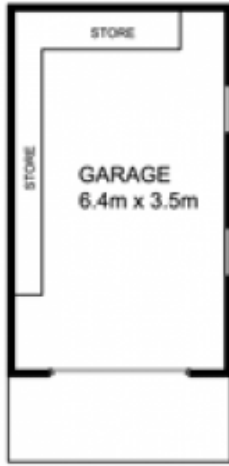
If you value privacy and space, this effortlessly liveable family home has been meticulously redesigned, fusing cutting edge style with practicality. Promising the ultimate entertainers lifestyle, the chic open plan interiors embrace a sunny north/east aspect with an uninterrupted flow through a sliding wall" of bi fold doors to the alfresco entertaining area and resort style in-ground pool and spa. The streamlined open plan kitchen features stainless steel appliances, stone bench tops, double-door dishwasher and breakfast bar. All three bedrooms are generously proportioned and include built in robes and plantation shutters plus, a bonus home office with plenty of extra built in storage space. A child friendly secure front yard with electric gate and intercom, 3 car carport and an additional garage/workshop, gas heating, spa bath to the main

Type : House
Land Size : 658 sqm
View : <https://www.jreproperty.com.au/sale/nsw/sutherland/gyMEA-bay/residential/house/7488158>

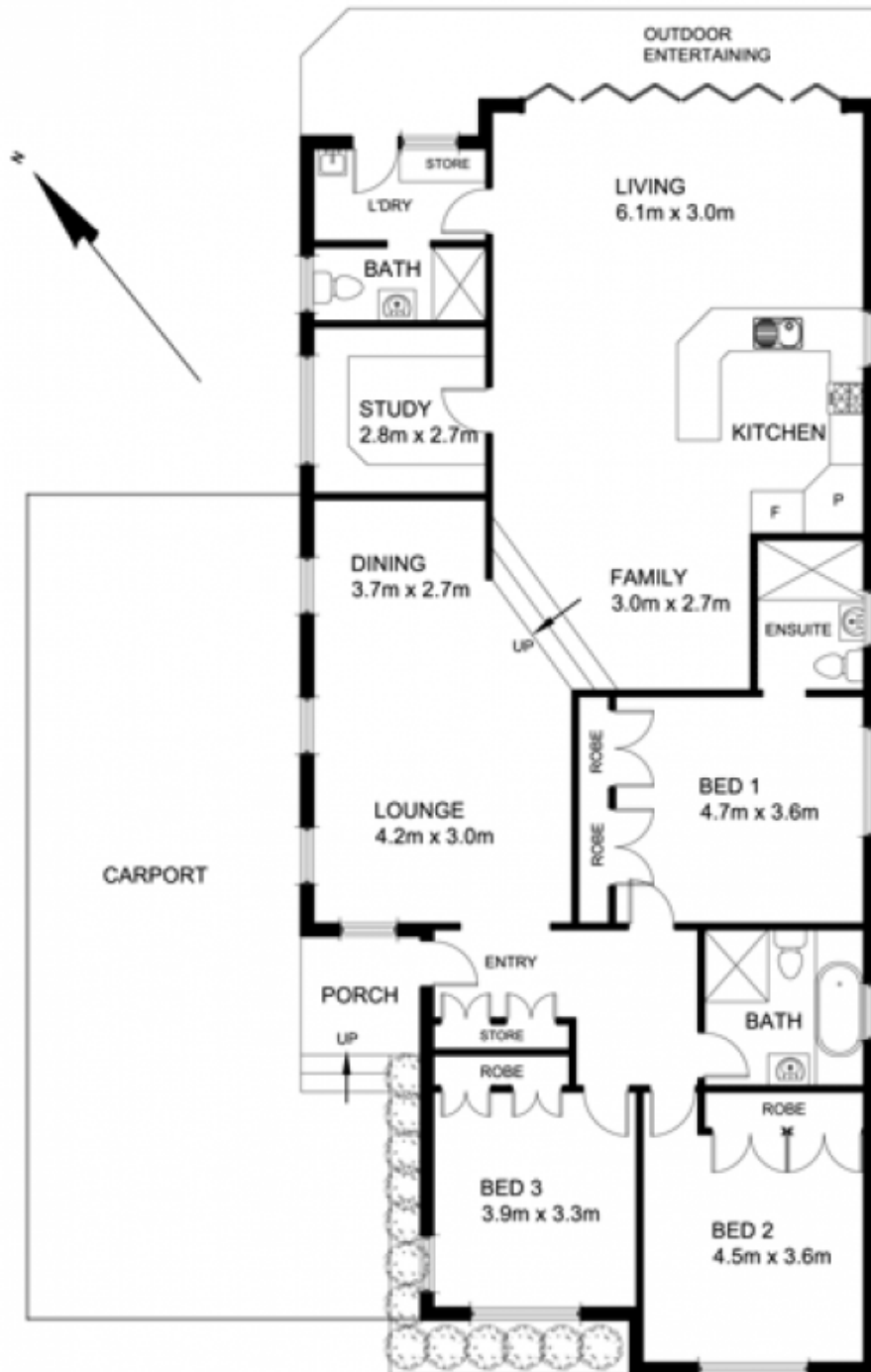


Luke Jeffree
02 9540 2222

[For full version visit the website](https://www.jreproperty.com.au)



260 GYMEA BAY ROAD
GYMEA BAY



ALL MEASUREMENTS ARE APPROXIMATE
 Whilst every attempt has been made to ensure the accuracy of the floor plan contained here, measurements of doors, windows, rooms and any other items are approximate only and no responsibility is taken for any error, omission, or misstatement. This plan is for illustrative purposes only and should be used as such by any prospective purchaser. The services, systems and appliances shown here have not been tested and no guarantee as to their operability or efficiency can be given. Manual fireplaces may be inactive. Rooms with cupboards and wardrobes are measured wall to wall and may exclude wardrobe and cupboard measurements.