



**192 Ellesmere Road GYMEA BAY NSW**

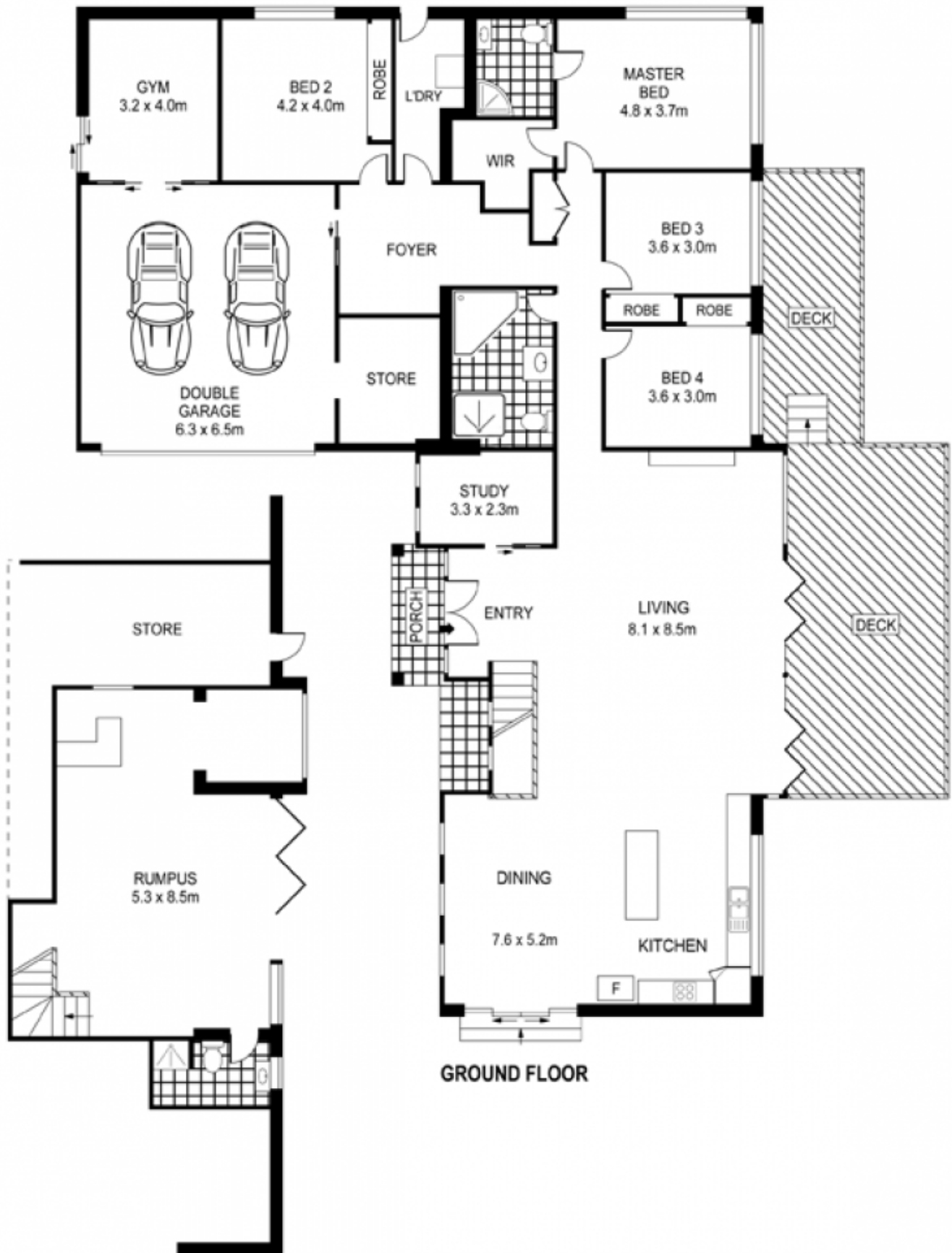
5 3 4

Idyllically set on a massive 1341sqm parcel of prime real estate, this stylish 5 bedroom family haven has been superbly reinvented throughout and offers a seamless transition of sleek contemporary interiors and alfresco entertaining areas. Immersed in a superb selection of fittings and stunning polished timber floors, the bright open plan living areas encompass expansive north easterly water views across Gymea Bay to Lightning Point and Yowie Bay. The heart of the home is the stunning designer kitchen which boasts a central breakfast bar, stainless steel appliances, glass splash backs and stone benches. Offering a choice of three stunning entertaining terraces which overlook the eco & child friendly low maintenance grassed yard, the entire home is dedicated to a relaxed easy lifestyle to be enjoyed by a family of all ages. The five generous bedrooms are further complimented by a home office, huge rumpus/billiard room with bar and an adjoining

**View :** <https://www.jreproperty.com.au/sale/nsw/sutherland/gymea-bay/residential/house/7488169>



**Luke Jeffree**  
**02 9540 2222**



**LOWER GROUND FLOOR**

Plans shown are for presentation purposes only and are not part of any legal document or title. They are subject to errors, omissions, inaccuracies and should not be used as a sole and accurate reference. Interested parties should make their own inquiries using independent sources.