



31 Vernon Avenue GYMEA BAY NSW

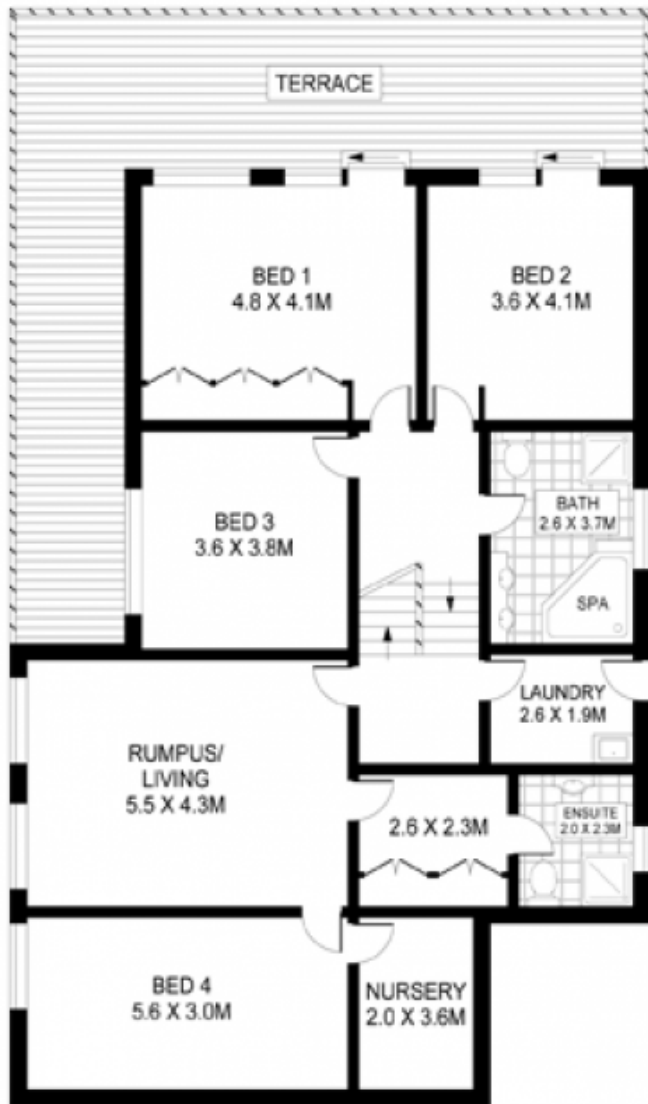
4 2 2

Perfectly positioned in a quiet, leafy & sought after street in exclusive GyMEA Bay presents this rare opportunity. Sprawling over 1,676sqm of land this large full brick original family home has plenty of scope and potential with out the fear of over capitalizing. Upstairs offers formal entry foyer, study, massive double garage with work shop area & plenty of storage, 3rd W/C, open plan lounge, dining, family and kitchen all with access to the entertaining terrace with beautiful bush outlook. Walk down stairs to a fabulous size rumpus room, 4 double size bedrooms (all with BIR), main with ensuite, nursery and walk in wardrobe. Private deck overlooking the sparkling in-ground pool and grassed yard completes this outstanding residence.

Large full brick family home on 1,676sqm

[For full version visit the website](https://www.jreproperty.com.au/sale/nsw/sutherland/gyMEA-bay/residential/house/7488212)

Type : House
Building Size : 276 sqm
Land Size : 1676 sqm
View : <https://www.jreproperty.com.au/sale/nsw/sutherland/gyMEA-bay/residential/house/7488212>



GROUND LEVEL



ENTRY LEVEL



SCALE (METRES)

Plans shown are for presentation purposes only and are not part of any legal document or title.
They are subject to errors, omissions, inaccuracies and should not be used as a sole and accurate reference.
Interested parties should make their own inquiries using independent sources.

INT : 276m²



31 VERNON AVENUE

GYMEA BAY