



143 Grays Point Road GRAYS POINT NSW

4 2 3

Spacious beyond compare this unique family offering provides value & size for the entire family. Boasting a terrific north facing valley view from the rear balcony makes for year round enjoyment. Past the fenced front yard & formal entry you are sure to appreciate the generous size bedrooms, open plan & very airy living area adjoining the balcony. Social island kitchen plus modernised bathrooms suggests this home is ready to just move in & enjoy. Huge downstairs rumpus complete with combustion fire, study & access outside to the in-ground pool. An amazing size triple lock up garage with inter

Generous size bedrooms, formal and informal living areas
Huge rumpus room complete with combustion fire place and study

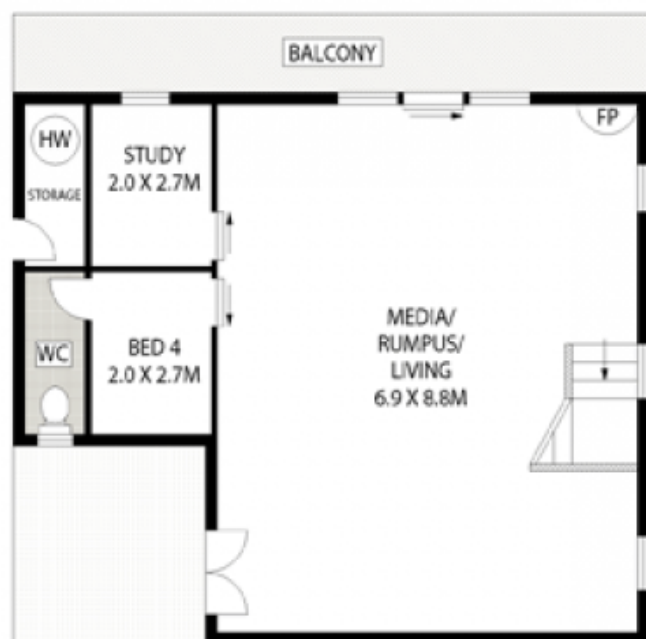
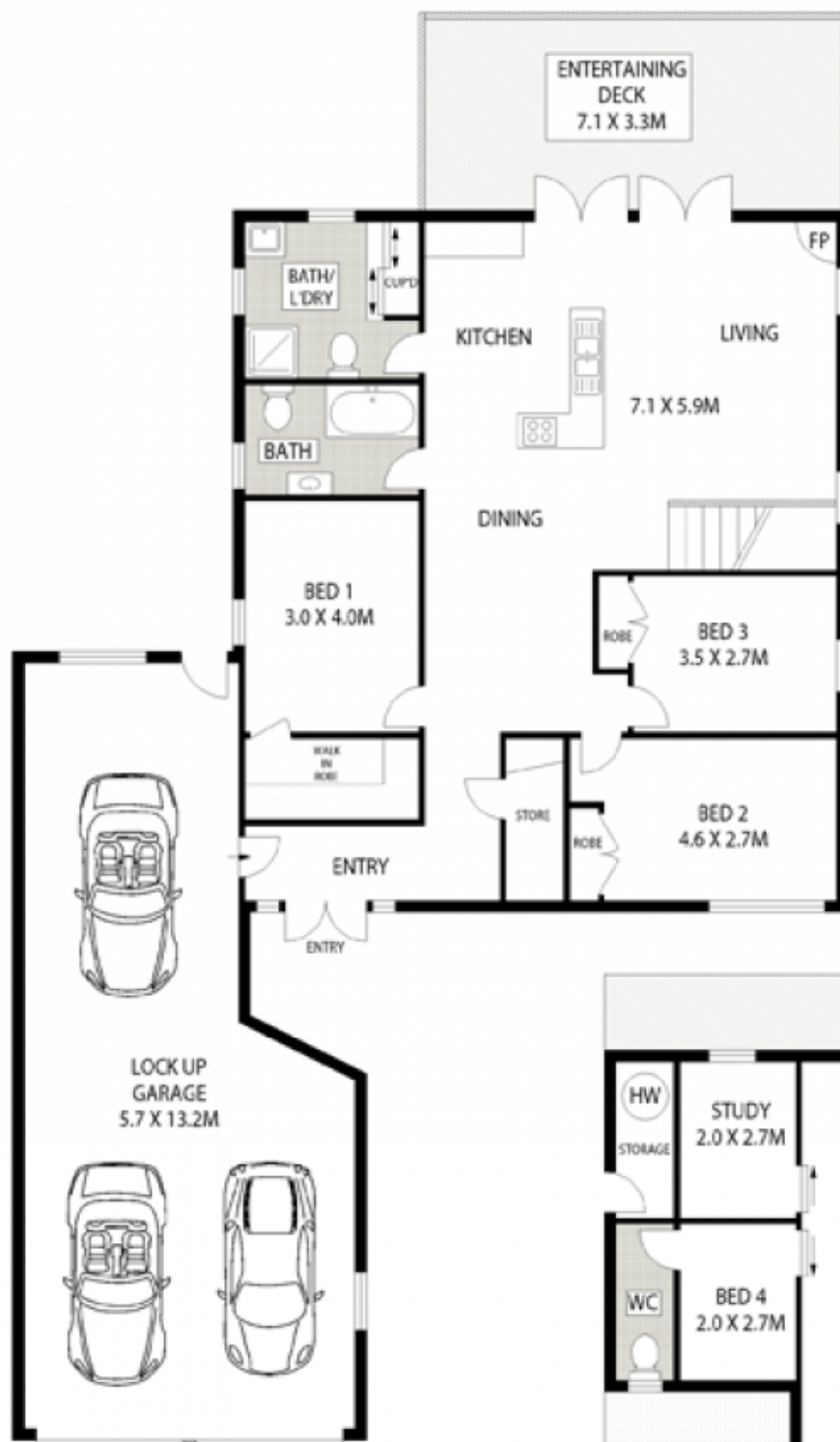
Type : House

View : <https://www.jreproperty.com.au/sale/nsw/sutherland/grays-point/residential/house/7488213>



Luke Jeffree
02 9540 2222

[For full version visit the website](https://www.jreproperty.com.au)



SCALE (METRES)

PLANS SHOWN ONLY INDICATIVE OF LAYOUT. DIMENSIONS ARE APPROXIMATE.

INT : 260m²
EXT : 48m²



143 GRAYS POINT ROAD

GRAYS POINT