



**75 Peninsular Road GRAYS POINT NSW**

3 1 2

Beyond the commanding brick facade is this light filled, private family residence. Boasting three generous sized bedrooms each with built-in robes, plus the potential for a fourth bedroom downstairs. The open plan contemporary living provides a unique tree top outlook from the entire home. Features include a beautifully finished bathroom complete with a separate/second toilet and a stunning new kitchen which overlooks the backyard and in-ground pool. Great size double lock up garage, plenty of off street parking and only a short walk to the boat ramp and shops, this home is sure to appeal to families of all ages and sizes!

**Type** : House

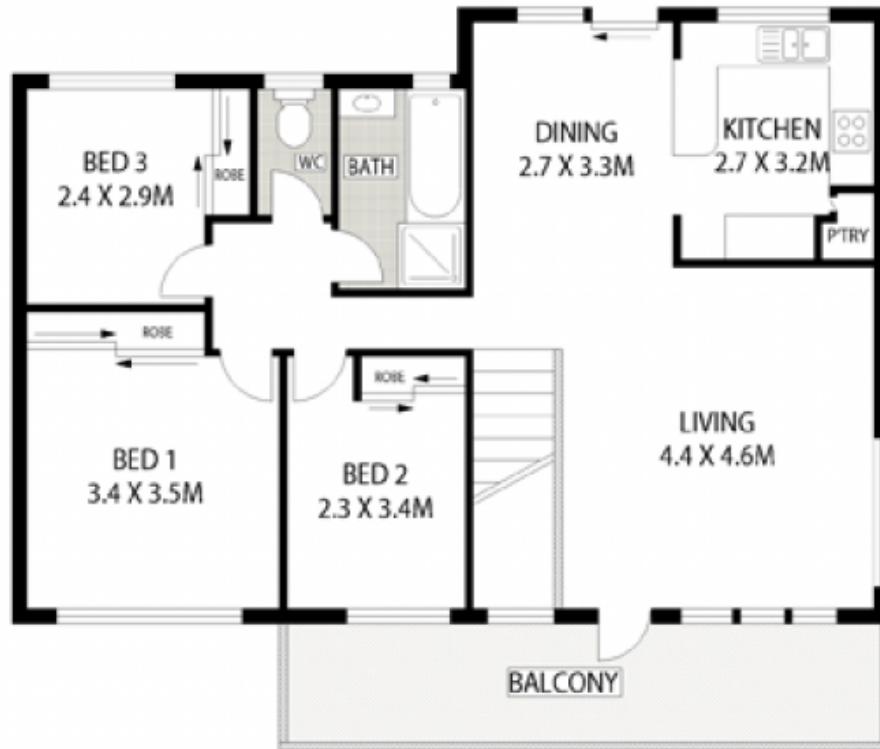
**View** : <https://www.jreproperty.com.au/sale/nsw/sutherland/grays-point/residential/house/7488214>



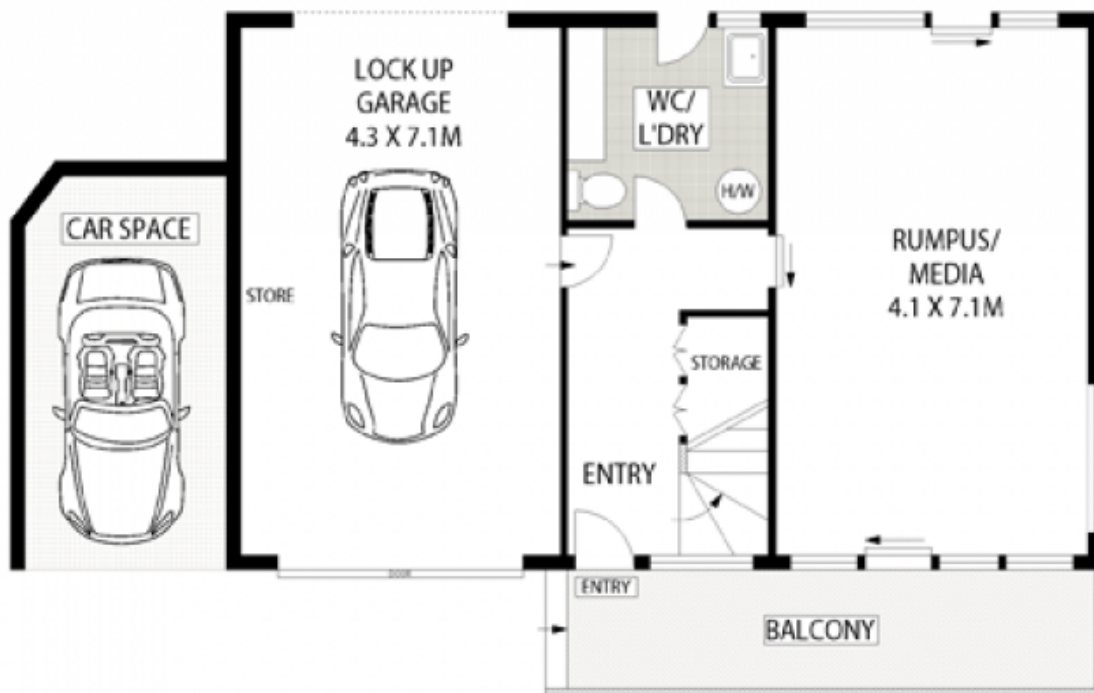
**Luke Jeffree**  
**02 9540 2222**

Contemporary upstairs and downstairs living areas, rumpus room  
School bus at your door, walking distance to boat ramp and

[For full version visit the website](#)



LEVEL ONE



GROUND LEVEL



PLANS SHOWN ONLY INDICATIVE OF LAYOUT. DIMENSIONS ARE APPROXIMATE.

INT : 166m<sup>2</sup>  
EXT : 40m<sup>2</sup>

