



37 Darryl Place GYMEA BAY NSW

4 2 2

Bounded by Coonong Creek Reserve, this exquisite home is exclusively positioned in one of GyMEA Bays most desirable settings. Custom built to enjoy the peaceful, natural bush surrounds, the versatile living spaces flow across three levels and feature timber Cathedral ceilings, big timber windows and wide sliding doors to exploit the tranquil, private vistas. Displaying a passion for perfection rarely seen in this price range, the in/outdoor spaces offer child oriented peace of mind and effortless alfresco living.

Media/rumpus room with built in bar, flows to alfresco terrace

Sunny informal lounge/dining room adjoins a bright modern kitchen

Parents retreat, master bedroom and balcony on

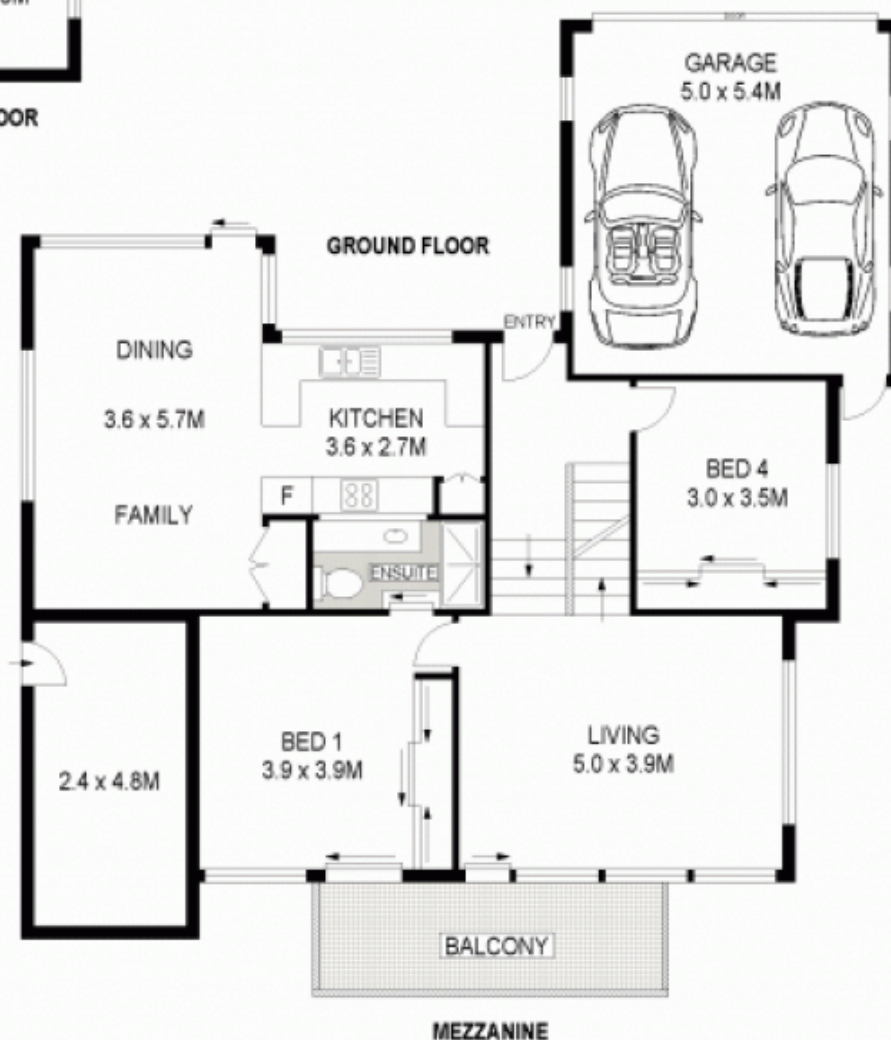
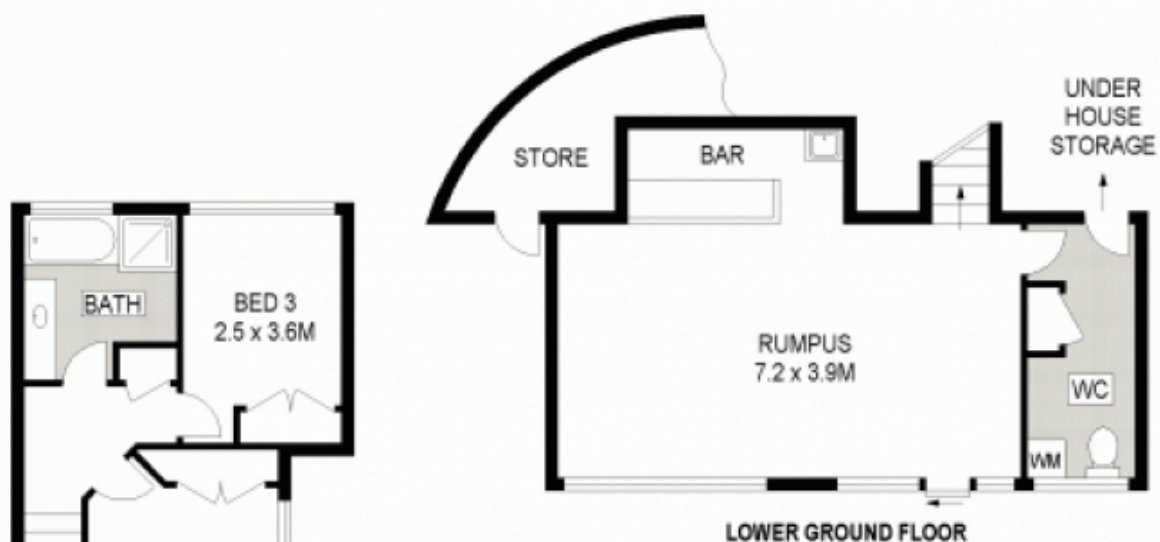
Type : House

View : <https://www.jreproperty.com.au/sale/nsw/sutherland/gyMEA-bay/residential/house/7488221>



Luke Jeffree
02 9540 2222

[For full version visit the website](https://www.jreproperty.com.au)



Plans shown are for presentation purposes only and are not part of any legal document or title. They are subject to errors, omissions, inaccuracies and should not be used as a sole and accurate reference. Interested parties should make their own inquiries using independent sources.

37 DARRYL PLACE

GYMEA BAY