



27 Mokera Avenue KIRRAWEE NSW

3 2 2

Dignified Duplex NO STRATA LEVIES

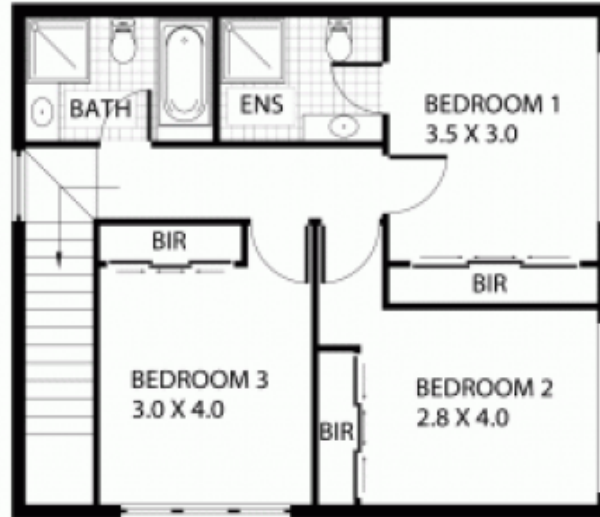
Secluded at the end of a quite cul-de-sac, this stylish & sophisticated duplex offers house like proportions with all the benefits of low maintenance living. If you value privacy and space, this effortlessly liveable home has been meticulously redesigned, fusing cutting edge style with practicality. Promising the ultimate entertainers lifestyle, the chic open plan interiors embrace a sunny north/east aspect that flow seamlessly to a great sized yard complete with a new timber deck ideal for year round entertaining. All the creature comforts have been accounted for, act quickly as this great opportunity is not likely to last!

Quite cul-de-sac, low maintenance living, sunny aspect

[For full version visit the website](#)

Type : Townhouse

View : <https://www.jreproperty.com.au/sale/nsw/sutherland/kirrawee/residential/townhouse/7488249>



0 1 2 3 4 5



Plans shown are for presentation purposes only and are not part of any legal document or title. They are subject to errors, omissions, inaccuracies and should not be used as a sole and accurate reference. Interested parties should make their own inquiries using independent sources.

27 MOKERA AVENUE

KIRRAWEE