



**15 Birubi Avenue GYMEA NSW**

3 1 2

Epitomising the great Australian dream, this affordable three bedroom brick home is idyllically positioned in a family friendly cul-de-sac location on a generous 600sqm block. Sure to be a winner with the kids, the big sunny backyard gives direct access to school playing fields, offers ample space for a pool if desired and is perfect for big family gatherings and BBQs. Well maintained throughout, the easy floor plan offers plenty of scope to add future value to the home at a later date.

Lounge and dining room with timber floors, air-conditioning, high ceilings

Tasmanian oak timber kitchen with pantry and plenty of cupboard space

Semi enclosed sunroom, updated bathroom, second w.c

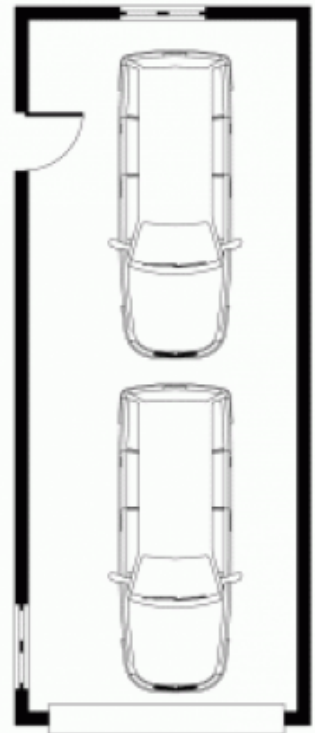
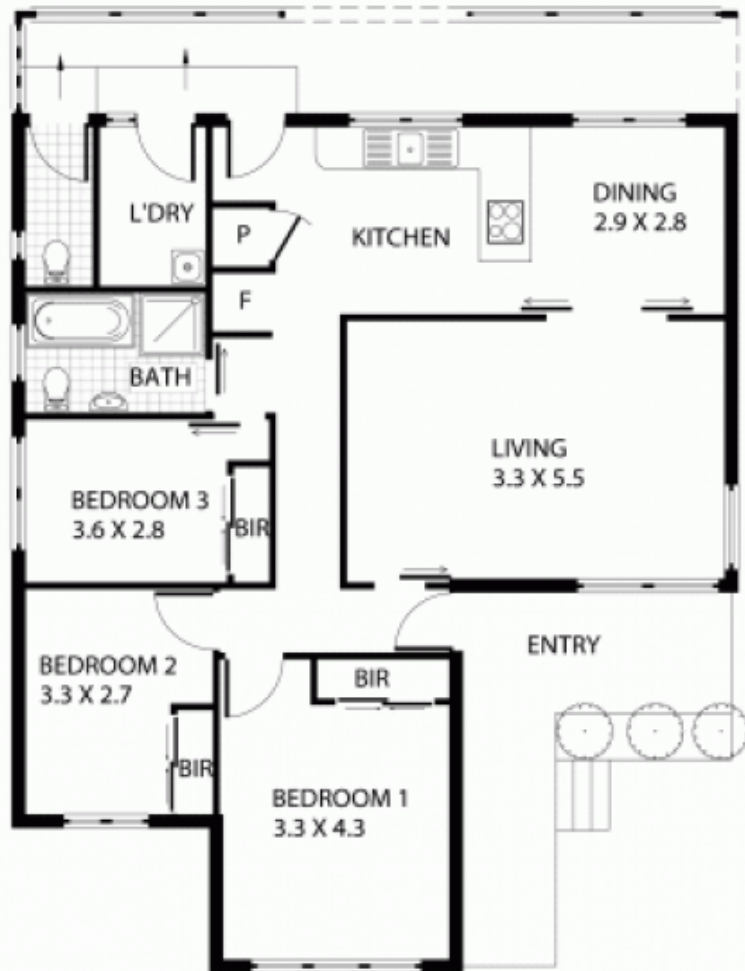
All three bedrooms feature built in mirrored robes and high

**Type** : House  
**Land Size** : 601 sqm  
**View** : <https://www.jreproperty.com.au/sale/nsw/sutherlandland/gymea/residential/house/7488250>



**Luke Jeffree**  
02 9540 2222

[For full version visit the website](https://www.jreproperty.com.au)



DOUBLE GARAGE  
4.0 X 10.0



Plans shown are for presentation purposes only and are not part of any legal document or title. They are subject to errors, omissions, inaccuracies and should not be used as a sole and accurate reference. Interested parties should make their own inquiries using independent sources.

15 BIRUBI AVENUE

GYMEA