



**3/196 Forest Road GYMEA NSW**

**3** **2** **2**

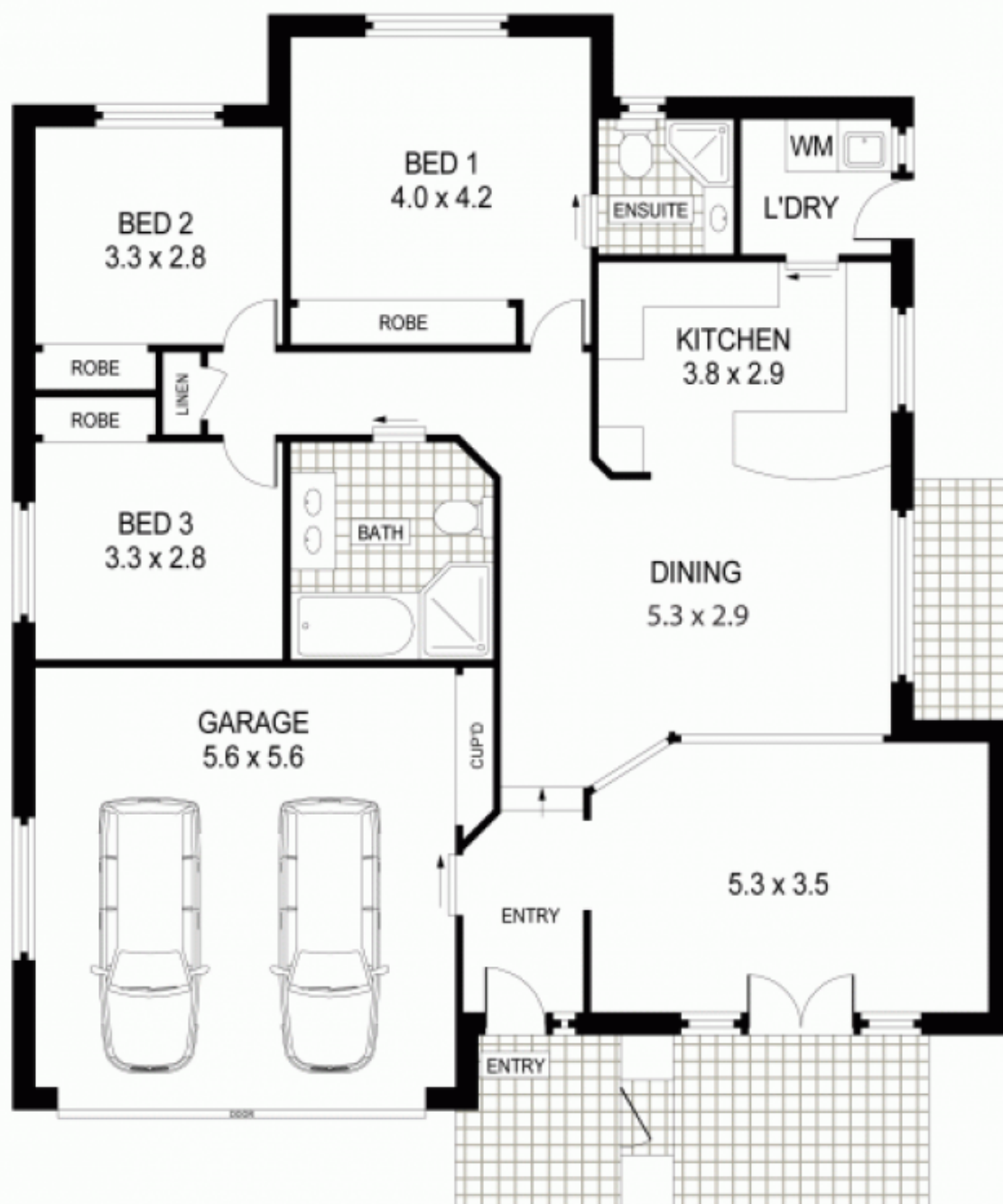
Idyllically positioned at the rear of a boutique complex of five premier residences, this magnificent free standing villa has been built to exacting standards and finished throughout with the highest quality fittings and fixtures. Private and secure, this is the perfect home for those wanting to downsize to single level living, without compromising on style or storage space.

**Type** : Villa  
**Land Size** : 273 sqm  
**View** : <https://www.jreproperty.com.au/sale/nsw/sutherland/gyMEA/residential/villa/7488255>

Formal lounge with French doors to sunny terrace  
Large dining room, sliding doors to manicured garden  
Open plan kitchen with Smeg appliances, breakfast bar  
Three bedrooms all with BIRs, master with en-suite  
Huge main bathroom, internal laundry with built ins  
Double garage with internal access, gated complex



**Luke Jeffree**  
**02 9540 2222**



GROUND LEVEL



Plans shown are for presentation purposes only and are not part of any legal document or title. They are subject to errors, omissions, inaccuracies and should not be used as a sole and accurate reference. Interested parties should make their own inquiries using independent sources.

3/196 FOREST ROAD

GYMEA BAY