



297 Gymea Bay Road GYMEA BAY NSW

4 2 2

Exclusively positioned in one of Gymea Bays most sought after addresses opposite Gymea Baths, this remarkable residence is ideal for those who love to entertain. Unsurpassed in its meticulous attention to detail, the immaculate open plan interiors offer multiple living and dining areas. Year round alfresco dining can be enjoyed from the front balcony or the expansive terrace which flows to a sunny child friendly grassed yard. Ideal for families of all ages!

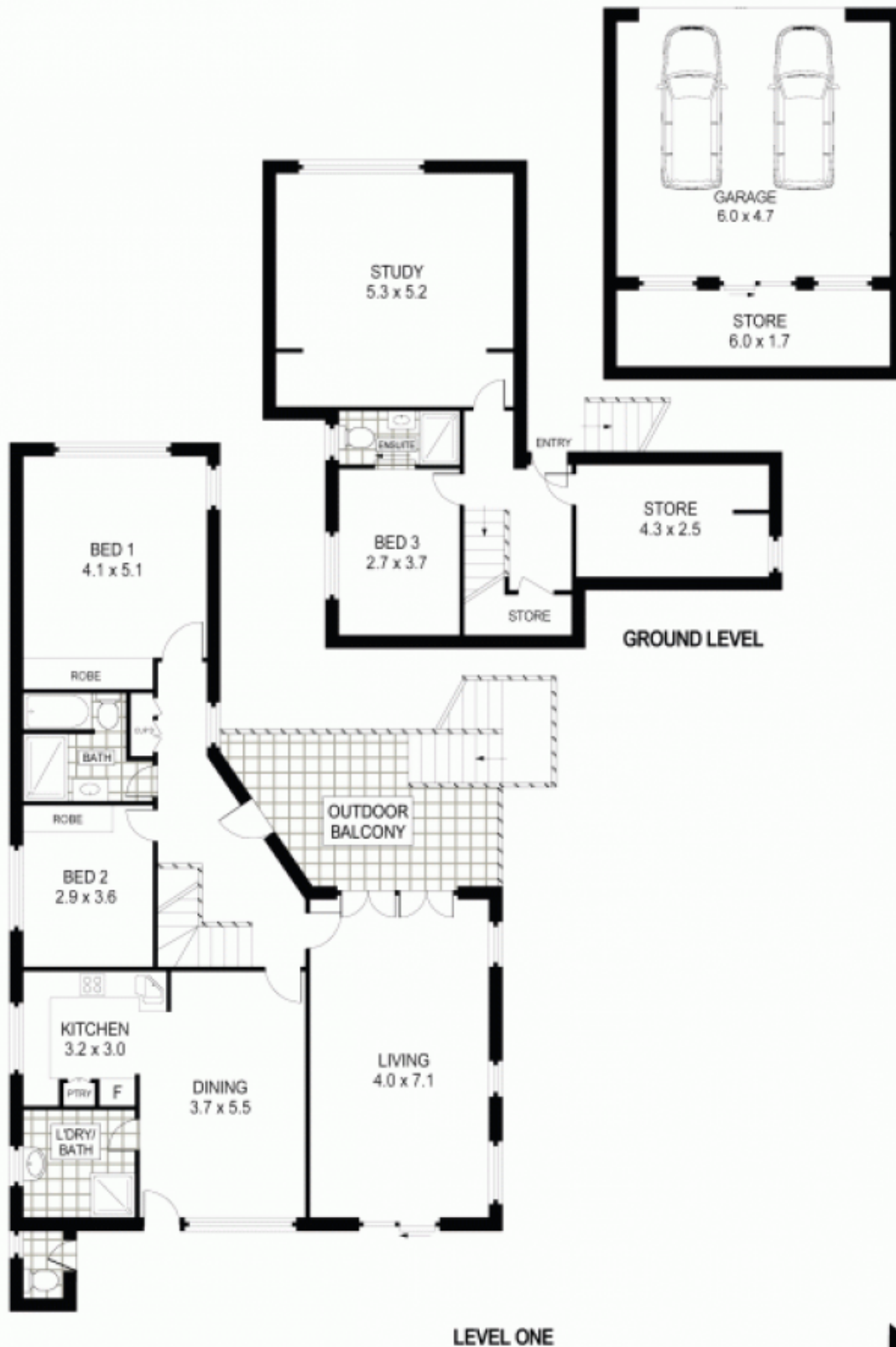
Type : House
Land Size : 936 sqm
View : <https://www.jreproperty.com.au/sale/nsw/sutherland/gymea-bay/residential/house/7488256>

- Formal lounge with French doors to sunny balcony
- Big dining room with glass to ceiling sliding doors
- Second rumpus - easily converted to fourth bedroom
- Open plan timber kitchen, stainless steel appliances
- New master bathroom, second bathroom downstairs
- Double garage with workshop, plenty of storage



Luke Jeffree
02 9540 2222

[For full version visit the website](https://www.jreproperty.com.au)



LEVEL ONE



SCALE (METRES)



Plans shown are for presentation purposes only and are not part of any legal document or title. They are subject to errors, omissions, inaccuracies and should not be used as a sole and accurate reference. Interested parties should make their own inquiries using independent sources.

297 GYMEA BAY ROAD

GYMEA BAY