



29/1 Warburton Street GYMEA NSW

2 1 2

Desirable Double Garage!

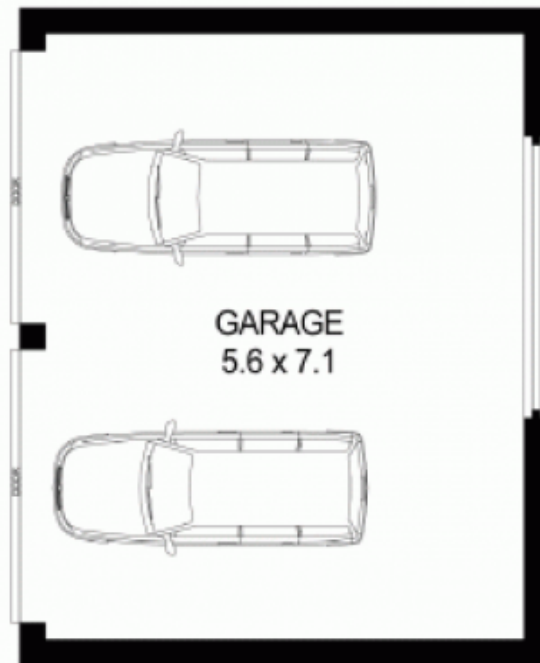
Privately positioned on the top floor, this north facing apartment displays a sleek fusion of style & luxury with unsurpassed attention to detail. Generous open plan living space flooded with all day light flows to idyllic balcony with district views. Superbly positioned to enjoy sought after Gymea Village and its cafes, restaurants, shopping and transport.

Brand new designer kitchen, stainless steel Smeg appliances
Fully tiled renovated bathroom, internal laundry, linen cupboard
Double sized bedroom both with mirrored built in

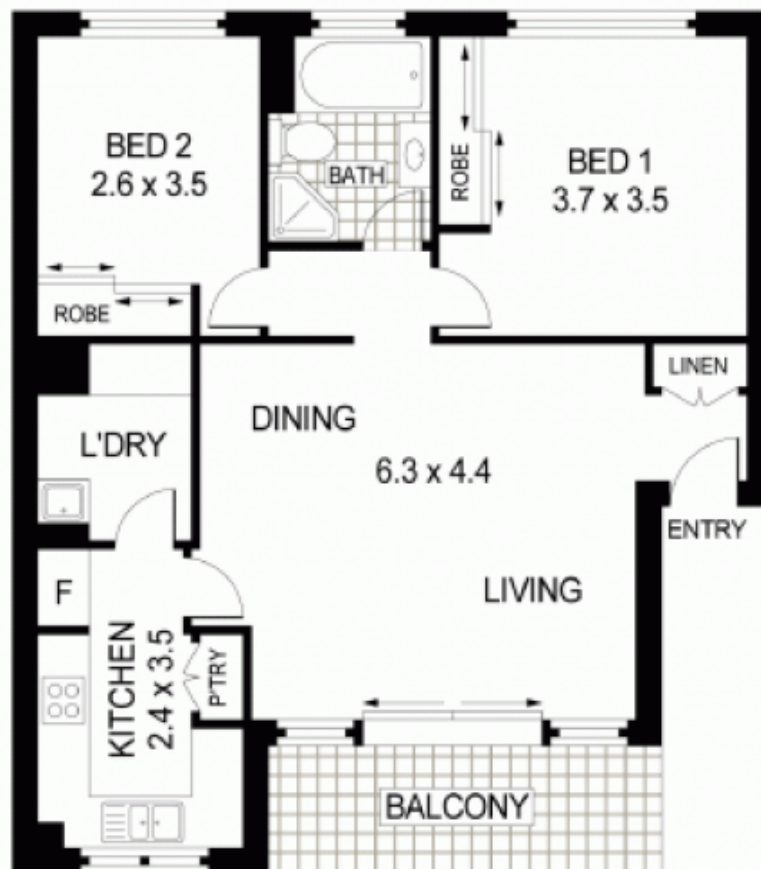
Type : Unit

View : <https://www.jreproperty.com.au/sale/nsw/sutherland/gymea/residential/unit/7488272>

[For full version visit the website](https://www.jreproperty.com.au)



BASEMENT



TOP FLOOR



Plans shown are for presentation purposes only and are not part of any legal document or title. They are subject to errors, omissions, inaccuracies and should not be used as a sole and accurate reference. Interested parties should make their own inquiries using independent sources.