



**79 Premier Street GYMEA NSW**

2 1 2

Offered to the market for the first time in over 55 years, this is a rare opportunity to secure prime level land in one of Gymeas most sought after streets. Perfectly liveable as is with plenty of room for a young family, this home is ripe for a creative renovation or astute buyers may knock down and rebuild their dream home and capitalise on its fantastic proximity to Gymeas caf? and shopping strip!

Two open plan lounge/dining rooms plus generous sunroom

Big galley style kitchen with updated timber look cupboards

Big bedrooms, master with mirrored built in robes

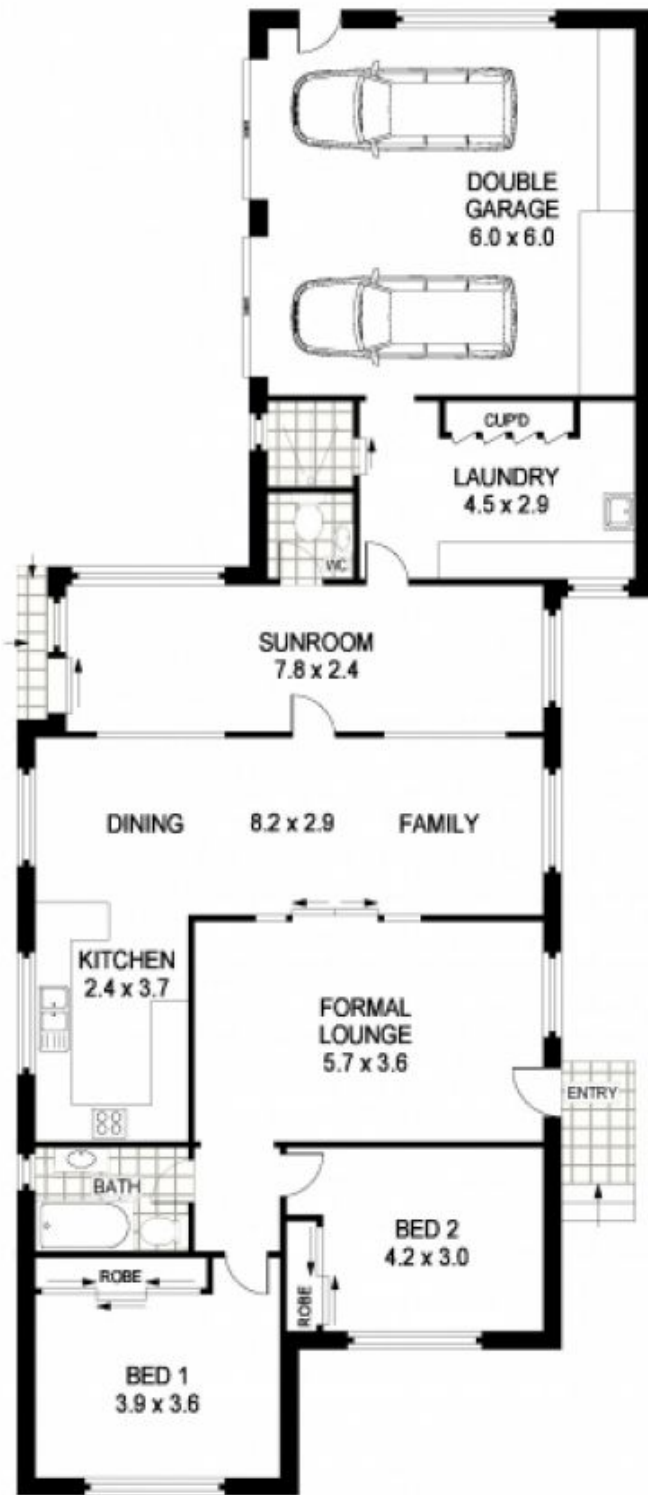
Updated bathroom plus second shower and powder room

Easy care yard, great level building block over sqm

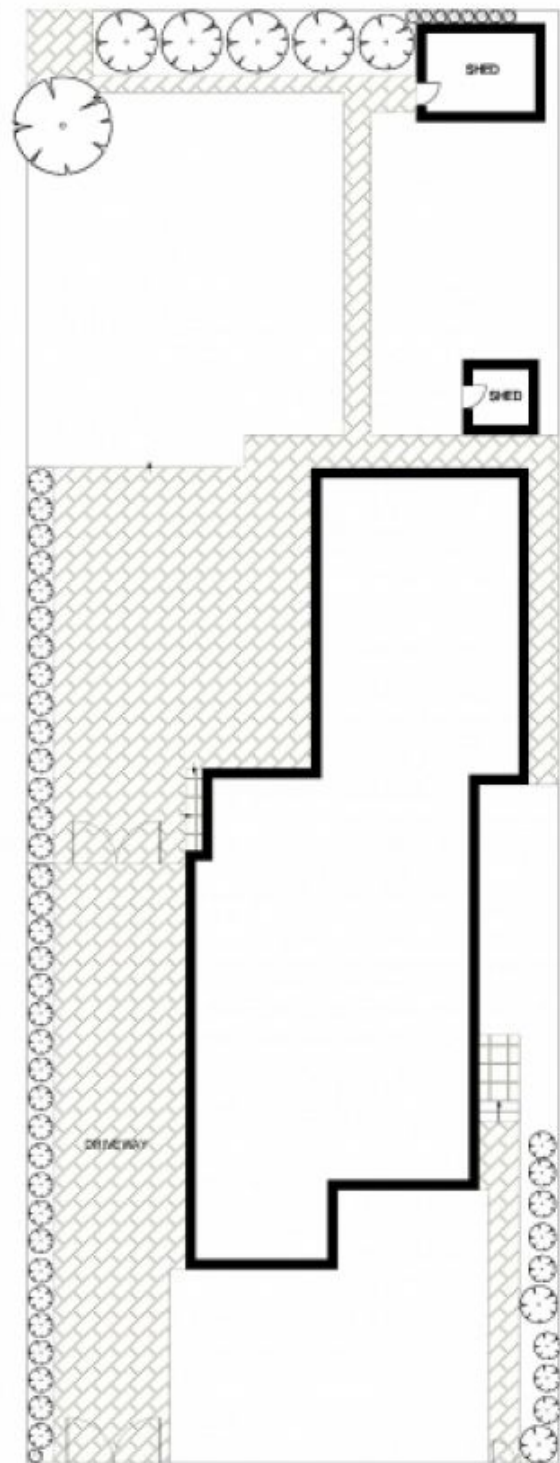
Huge double garage plus off street parking for

**Type** : House  
**Land Size** : 663 sqm  
**View** : <https://www.jreproperty.com.au/sale/nsw/sutherlandland/gymea/residential/house/7488275>

[For full version visit the website](https://www.jreproperty.com.au)



GROUND FLOOR



SITE PLAN  
(NOT TO SCALE)



Plans shown are for presentation purposes only and are not part of any legal document or title. They are subject to errors, omissions, inaccuracies and should not be used as a sale and accurate reference. Interested parties should make their own inquiries using independent sources.

79 PREMIER STREET

GYMEA