



4/168 Forest GYMEA NSW

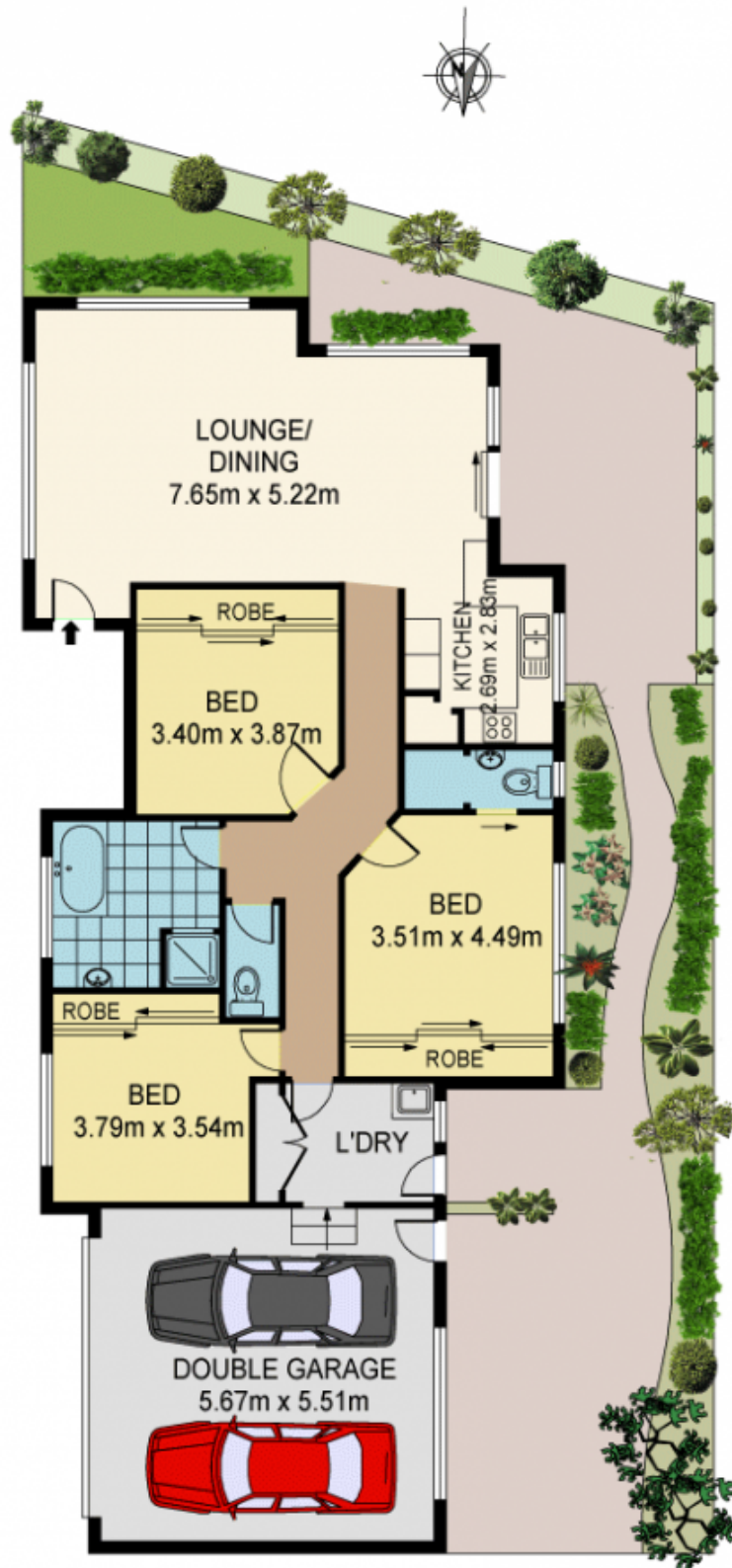
3 2 2

Single level living has never been easier than that afforded by this fantastic three bedroom Villa home. Perfectly positioned at the rear of a small complex of five only, this delightful residence shares just one common garage wall with its neighbour! Easy to maintain and boasting 250sqm in total, the open plan living space flows to a private sunny courtyard. Just minutes to Gymea shops, cafes and station, you'll be happy to leave the car at home in the big double garage.

Type : Villa
Land Size : 250 sqm
View : <https://www.jreproperty.com.au/sale/nsw/sutherlandland/gymea/residential/villa/7488277>

Open plan lounge/dining/kitchen with air conditioning
Master bedroom with en-suite, all with triple built in robes
Bright timber kitchen with plenty of cupboard space
Modern bathroom, big laundry, loads of storage space
Situated at the quiet rear of the complex, just one common

[For full version visit the website](https://www.jreproperty.com.au)



GROUND FLOOR

INT : 143.01 m²

4/168 FOREST ROAD, GYMEA

Plans shown are for presentation purposes only and are not part of any legal document or title and are subject to errors, omissions, inaccuracies and should not be used as sole and accurate reference. Interested parties should make their own enquiries using other sources supplied.