

1/726 Kingsway GYMEA NSW

2 1 1

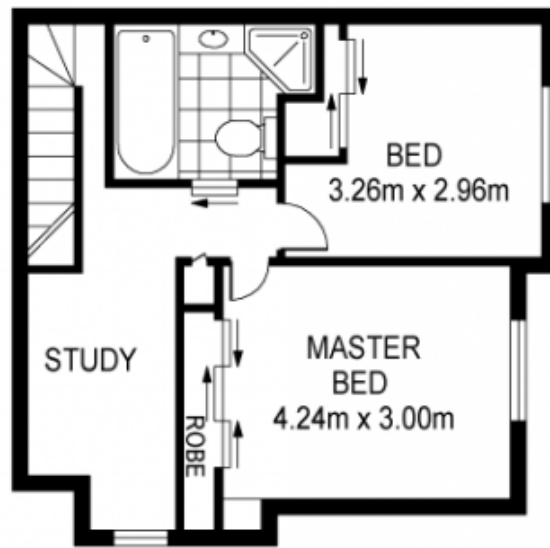
A light filled haven of immaculate presentation, this stylish town home has many special qualities featuring generous proportions, modern finishes and an unbeatable location a short walk to all amenities. Featuring house like proportions, living areas are spacious opening onto a large private entertainers courtyard and child friendly lawn and gardens.

Type : Townhouse
Land Size : 189 sqm
View : <https://www.jreproperty.com.au/sale/nsw/sutherlandland/gymea/residential/townhouse/7488285>

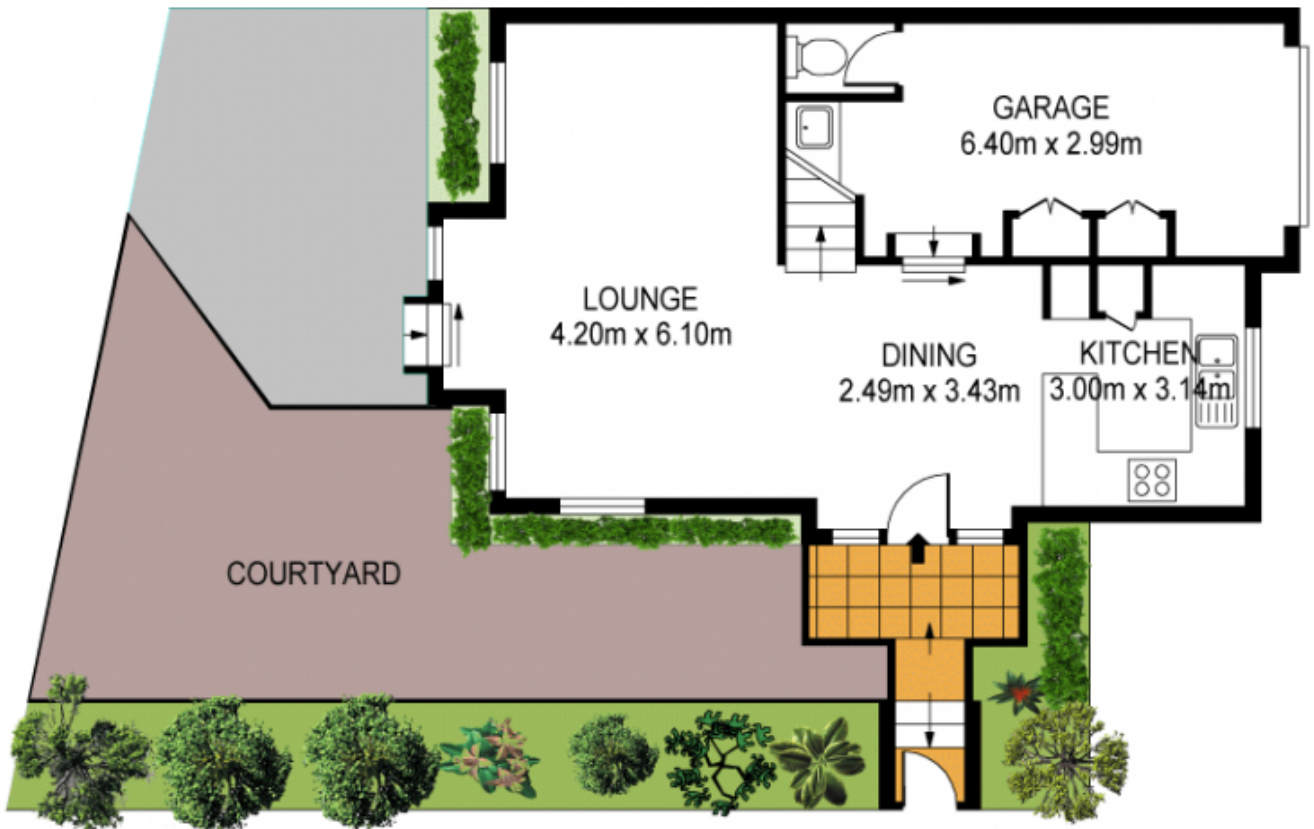
Modern complex, one of only 9 with security access
 Intercom entrance, soaring ceilings and skylights
 Stunning granite kitchen with stainless steel appliances
 Spacious versatile interiors, open plan lounge & dining
 Study niche, 2 beds with BIRs, master with air, spa bath
 1 lock up car configured as rumpus with toilet & storage



Luke Jeffree
02 9540 2222



FIRST FLOOR



GROUND FLOOR

INT : 102.17m²

1/726 KINGSWAY; GYMEA

Plans shown are for presentation purposes only and are not part of any legal document or title and are subject to errors, omissions, inaccuracies and should not be used as sole and accurate reference. Interested parties should make their own enquiries using other sources supplied.