



**26 Phillip Street OYSTER BAY NSW**

3 2 1

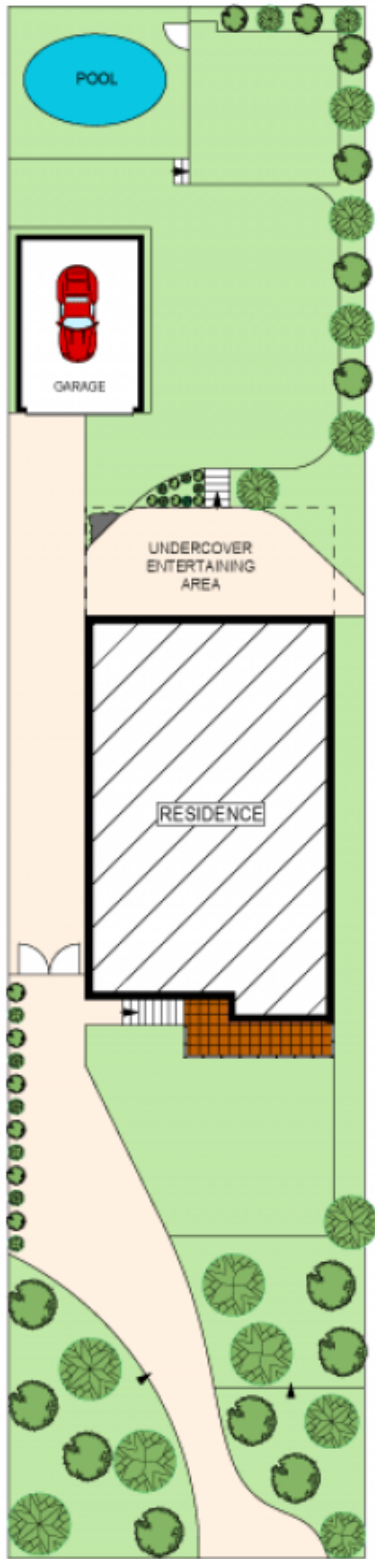
Commanding elevated north facing green vistas, this attractive family residence is both a private haven and classic entertainer. Light soaked interiors are dressed with quality appointments whilst the expansive open plan floor plan, large covered deck and secure child friendly lawns and gardens ensure a superb family lifestyle. Ideally located, its just steps to the local school, shops and bus.

**Type** : House  
**Land Size** : 696 sqm  
**View** : <https://www.jreproperty.com.au/sale/nsw/sutherland/oyster-bay/residential/house/7488292>

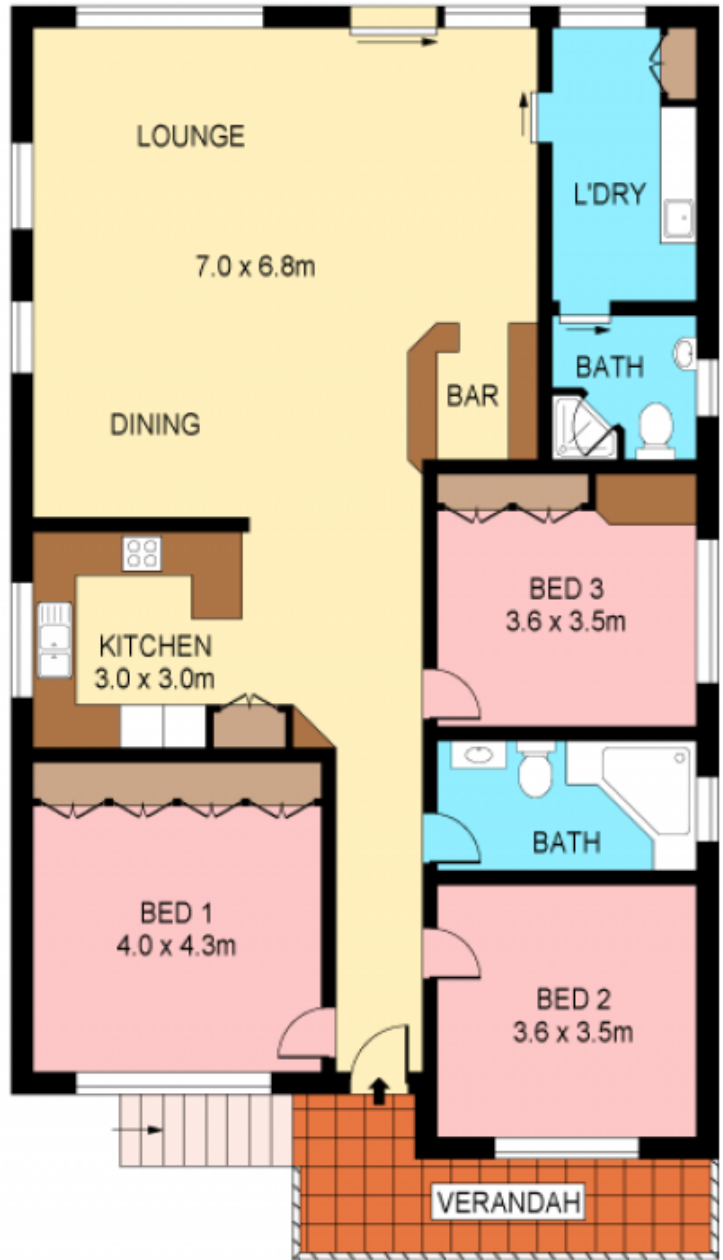
Privately set high above the street on a landscaped 695sqm

Attractive interiors enjoy high ceilings and timber floors  
 Generous dining and family living flows to alfresco deck  
 Granite bar with custom cabinetry, large modern kitchen  
 Tranquil verandah to enjoy the views, main bath with spa  
 Large beds, 2 with BIRs, ducted air, storage, lock up

[For full version visit the website](https://www.jreproperty.com.au)



**SITE PLAN**  
(NOT TO SCALE)



**GROUND FLOOR**



Plans shown are for presentation purposes only and are not part of any legal document or title. They are subject to errors, omissions, inaccuracies and should not be used as a sole and accurate reference. Interested parties should make their own inquiries using independent sources. Ref. No. 9784

