



110 Ellesmere Road GYMEA BAY NSW

4 2 3

On a magnificent 1916sqm plus PO deep waterfront site, sweeping 180° panoramas are showcased from every level of this exceptional home. Designed for a family lifestyle beyond compare, multiple living areas include a purpose built theatre, rumpus with bar, outstanding entertaining decks and open plan living and dining. An inclinator quickly descends to the waterside playground with low tide beach, 3 ? tonne slipway, permanent deep water jetty and boatshed. Offers considered with flexible settlement terms available

Beautifully updated for spectacular contemporary living
Stylish granite kitchen with stainless appliances and views
4 bedrooms across one level, master with WIR, ensuite & deck

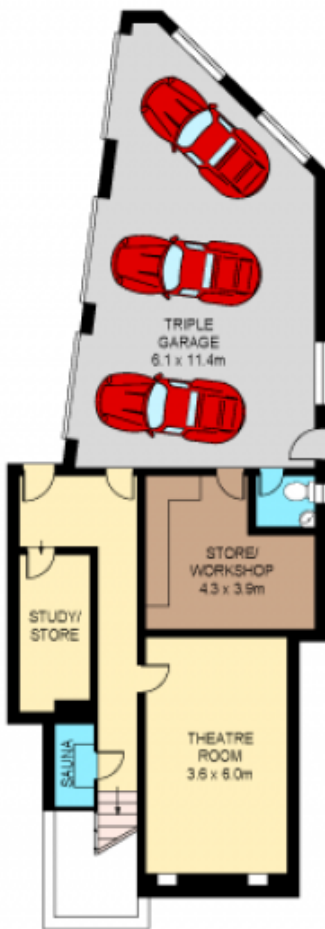
Office, study nook, two stylish bathrooms & two powder

Type : House
Land Size : 1916 sqm
View : <https://www.jreproperty.com.au/sale/nsw/sutherlandland/gymea-bay/residential/house/7488293>



Luke Jeffree
02 9540 2222

[For full version visit the website](https://www.jreproperty.com.au)



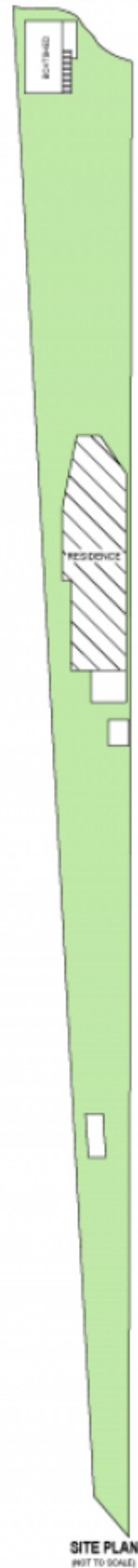
LOWER GROUND FLOOR



GROUND FLOOR



TOP FLOOR/
ENTRY LEVEL



SCALE (METRES)

Plans shown are for presentation purposes only and are not part of any legal document or title. They are subject to errors, omissions, inaccuracies and should not be used as a sole and accurate reference. Interested parties should make their own inquiries using independent sources.
Ref. No. 5945

