



1 Betham Place KIRRAWEE NSW

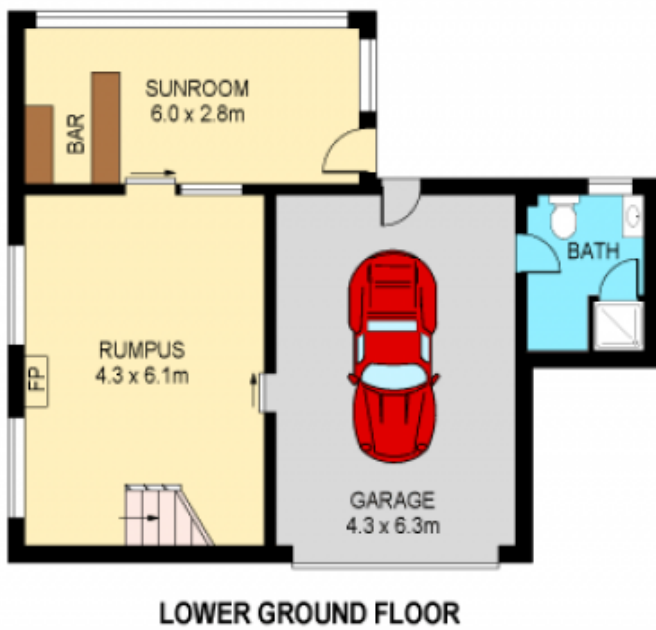
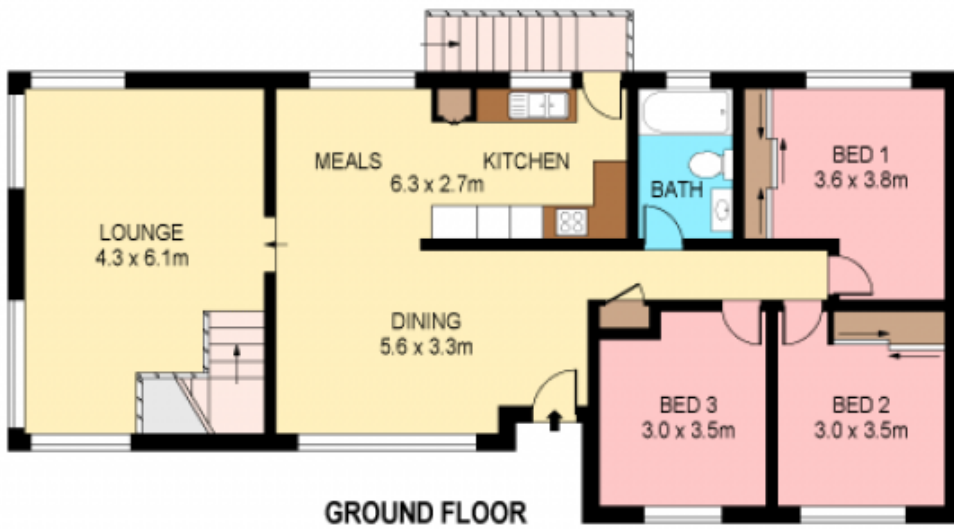
3 2 2

A striking renovation has transformed this expansive home into a stunning retreat ideal for relaxing and entertaining. Superbly appointed over two levels, interiors include family room, rumpus with slow combustion fire and fabulous party room with new Caesarstone bar which spills out onto a fabulous entertainers terrace. Idyllically located in a quiet cul-de-sac, national park views are captured from the top level.

Beautifully landscaped, elevated with perfect N/E aspect
 Stunning floating timber floors, contemporary colour tones
 Chic kitchen with full compliment of Kleenmaid appliances
 3 generous bedrooms plus modern bathroom
 Fully fenced with tranquil gardens, sandpit & water feature
 Huge under house storage, 2nd bath, ample scope to expand

Type : House
Land Size : 556 sqm
View : <https://www.jreproperty.com.au/sale/nsw/sutherlandland/kirrawee/residential/house/7488297>

[For full version visit the website](https://www.jreproperty.com.au)



Plans shown are for presentation purposes only and are not part of any legal document or title. They are subject to errors, omissions, inaccuracies and should not be used as a sole and accurate reference. Interested parties should make their own inquiries using independent sources.
Ref. No: 10021



1 BETHAM PLACE

KIRRAWEE