



18 Kanning Avenue GYMEA BAY NSW

4  2  1 

Ideally located in a sought after leafy avenue, whisper quiet and enjoying a sunny north aspect, on a near level 955sqm block. Functional floor plan offers easy living upstairs and rumpus plus storeroom and garage downstairs.

Fabulous in-ground pool
Quality Blackbutt timber flooring
Enormous potential

Type : House
Land Size : 955 sqm
View : <https://www.jreproperty.com.au/sale/nsw/sutherland/gymea-bay/residential/house/7488303>



SITE PLAN (NOT TO SCALE)

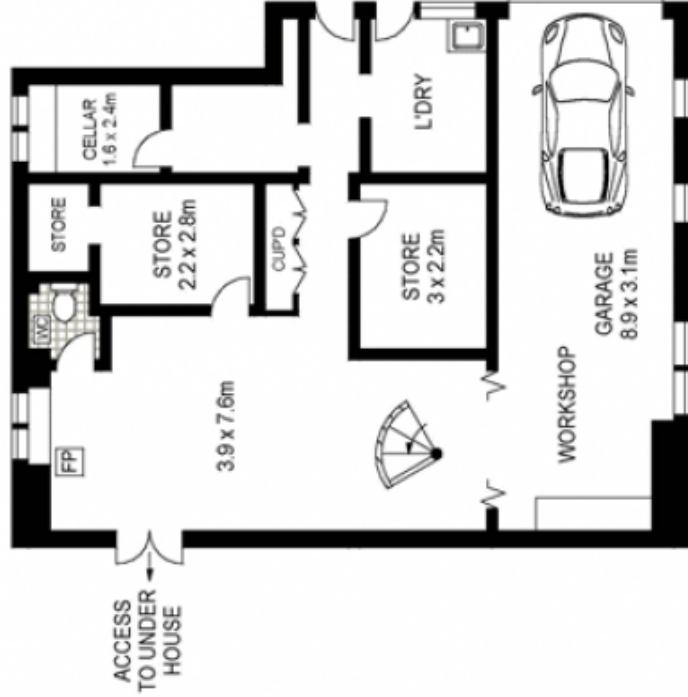


GROUND FLOOR



SCALE (METRES)

PLANS SHOWN ONLY INDICATIVE OF LAYOUT. DIMENSIONS ARE APPROXIMATE.



LOWER GROUND FLOOR

