



218A Ellesmere Road GYMEA BAY NSW

6 3 1

Impressive in both proportions and appeal, this peninsula residence offers a spectacular environment with multiple family and entertaining zones, sprawling deck and heated pool set on 1012m² of child friendly lawns and gardens. Two levels of living capture glorious bush and bay views displaying a versatile floor plan to suit all needs. Quiet and tranquil, it enjoys easy access to village shops, schools, bus and train.

Multiple zones includes formal lounge, family living, meals & rumpus

Light filled and airy with conservatory style wrap around windows

Spacious granite kitchen with quality stainless steel appliances

5 beds on upper level include grand master with ensuite &

Type : House

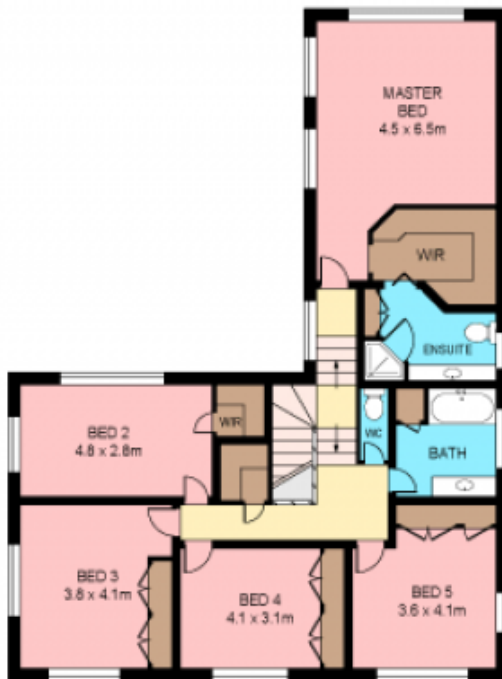
Land Size : 1012 sqm

View : <https://www.jreproperty.com.au/sale/nsw/sutherland/gymea-bay/residential/house/7488305>



Luke Jeffree
02 9540 2222

[For full version visit the website](https://www.jreproperty.com.au)



FIRST FLOOR

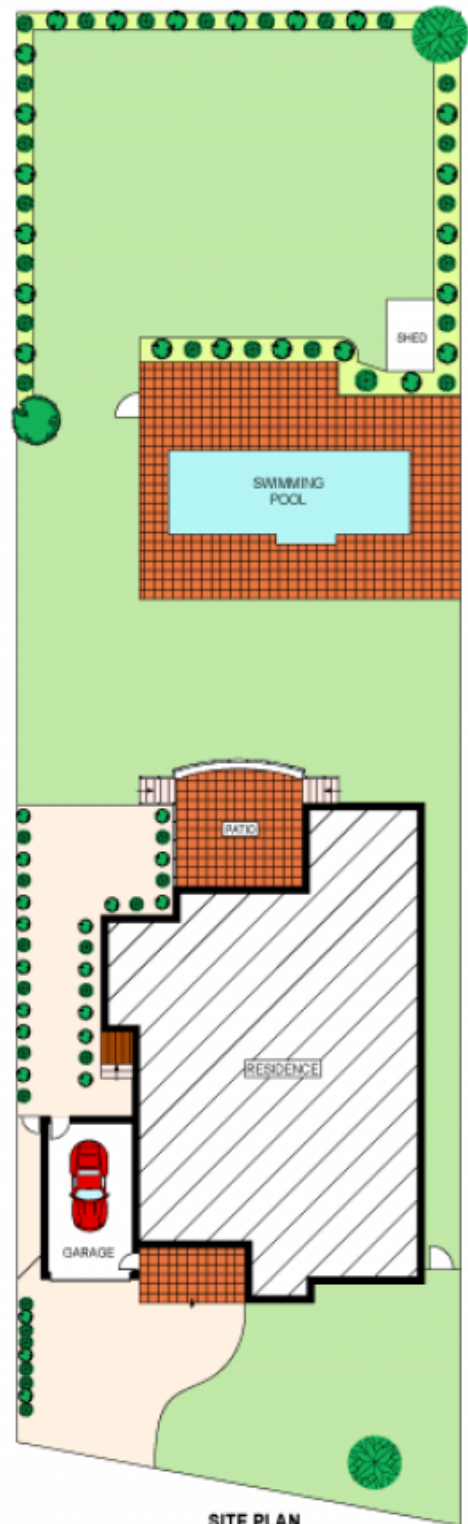


GROUND FLOOR



SCALE (METRES)

Plans shown are for presentation purposes only and are not part of any legal document or title. They are subject to errors, omissions, inaccuracies and should not be used as a sole and accurate reference. Interested parties should make their own inquiries using independent sources.
Ref. No. 10574



SITE PLAN
(NOT TO SCALE)



218A ELLESMERE ROAD

GYMEA BAY