



39/19 Central Road MIRANDA NSW

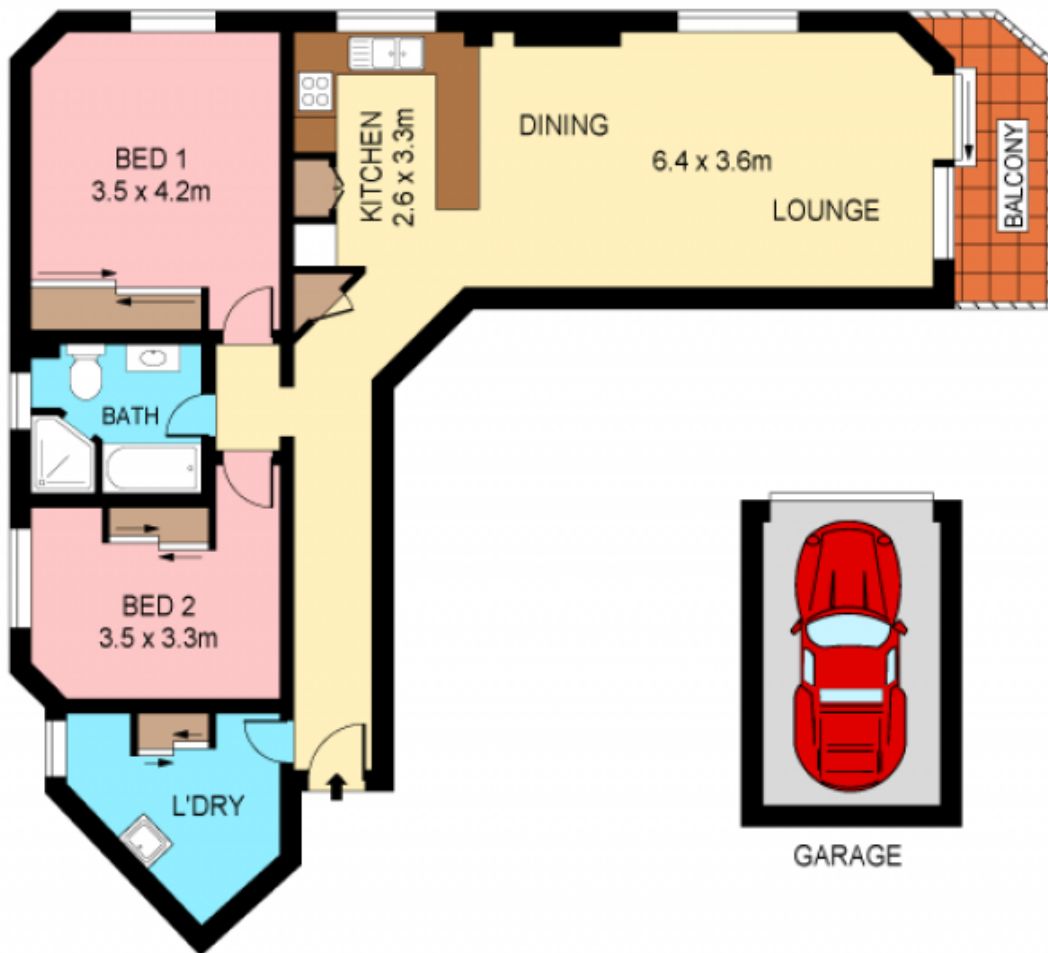
2 1 1

Exceptional far reaching panoramas across Botany Bay, Georges River and the surrounding hinterland are captured from this elevated 5th floor apartment located in a well maintained security building. Positioned for a lifestyle of supreme convenience in the vibrant village hub, all amenities are literally at your doorstep including local shops, eateries, train, bus and Westfield Miranda.

Type : Unit
Land Size : 101 sqm
View : <https://www.jreproperty.com.au/sale/nsw/sutherland/miranda/residential/unit/7488308>

Well maintained apartment with ideal north facing aspect
 Open plan lounge and dining flows to the adjoining balcony
 Generous modern kitchen features stainless appliances
 Two bedrooms located for privacy each with built in robes
 Large separate laundry with built in storage cupboards
 Reverse cycle air in living areas, single lock up garage

[For full version visit the website](#)



NOTE : SINGLE LOCK-UP GARAGE



Plans shown are for presentation purposes only and are not part of any legal document or title. They are subject to errors, omissions, inaccuracies and should not be used as a sole and accurate reference. Interested parties should make their own inquiries using independent sources.
Ref. No: 10920



39/19 CENTRAL ROAD

MIRANDA