



260A Ellesmere Road GYMEA BAY NSW

4 3 4

Exclusively positioned in one of GyMEA Bays premier streets, this exquisite family residence offers an unsurpassed lifestyle of quietude and privacy. A meticulous interior design fusing sweeping interconnecting living spaces with stylish appointments creates an elegant and effortlessly liveable retreat, purposefully designed to embrace the delightful tree top vistas and water glimpses to the Royal National Park. Generous open plan living spaces flow to an expansive balcony which overlooks the resort style swimming pool. If position and style is high on the agenda, this home is sure to fit the bill! Generous open plan lounge/dining/kitchen flows to wide alfresco balcony

State of the art kitchen, Blanco s/s appliances, island breakfast bar

Four generous bedrooms with BIRs, master with WIRs and

Type : House
Land Size : 639 sqm
View : <https://www.jreproperty.com.au/sale/nsw/sutherland/gyMEA-bay/residential/house/7488309>

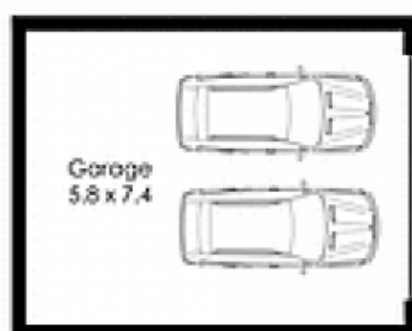


Luke Jeffree
02 9540 2222

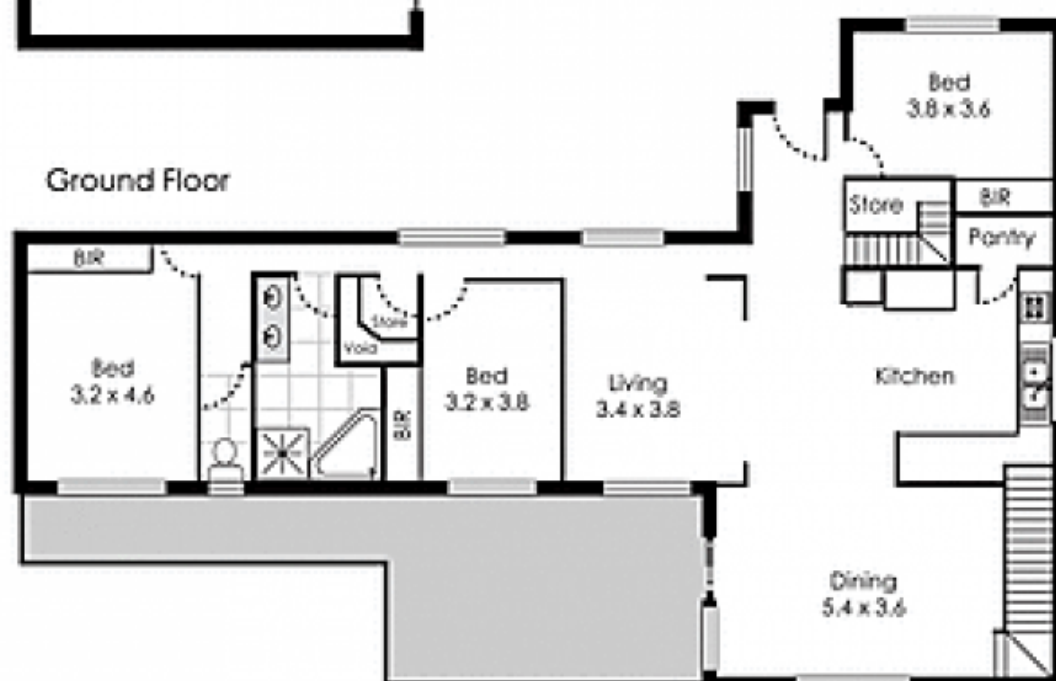
[For full version visit the website](https://www.jreproperty.com.au)

Gymea Bay

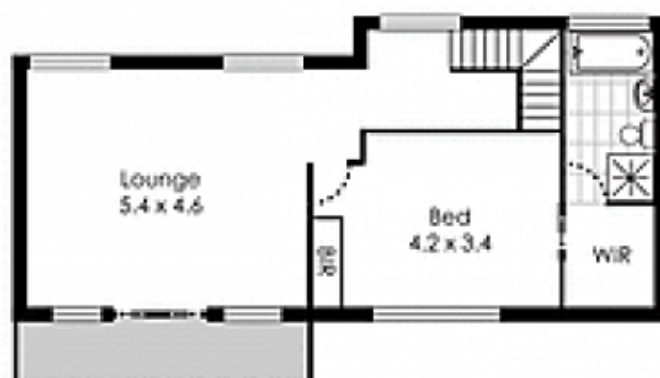
260a Ellesmere Road



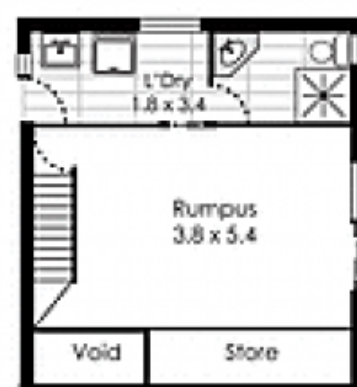
Ground Floor



First Floor



Lower Ground Floor



Please note: all stated dimensions are approximate only. Particulars given are for general information only and do not constitute any representation on the part of the vendor or agent.