



**14/31-35 Premier Street GYMEA NSW**

**3** **2** **2**

Private, light filled and set in leafy surrounds, this modern apartment boasts substantial interiors, modern finishes and an exceptional location just metres from the vibrant hub of Gymea village, train and bus. Positioned on the first floor, to the rear of an immaculate security complex, it enjoys a desirable easy care lifestyle without compromising on comfort, space or style.

Spacious open plan lounge & dining expands to alfresco deck

Appealing timber gas kitchen features quality stainless appliances

Three generous bedrooms include master with ensuite & balcony

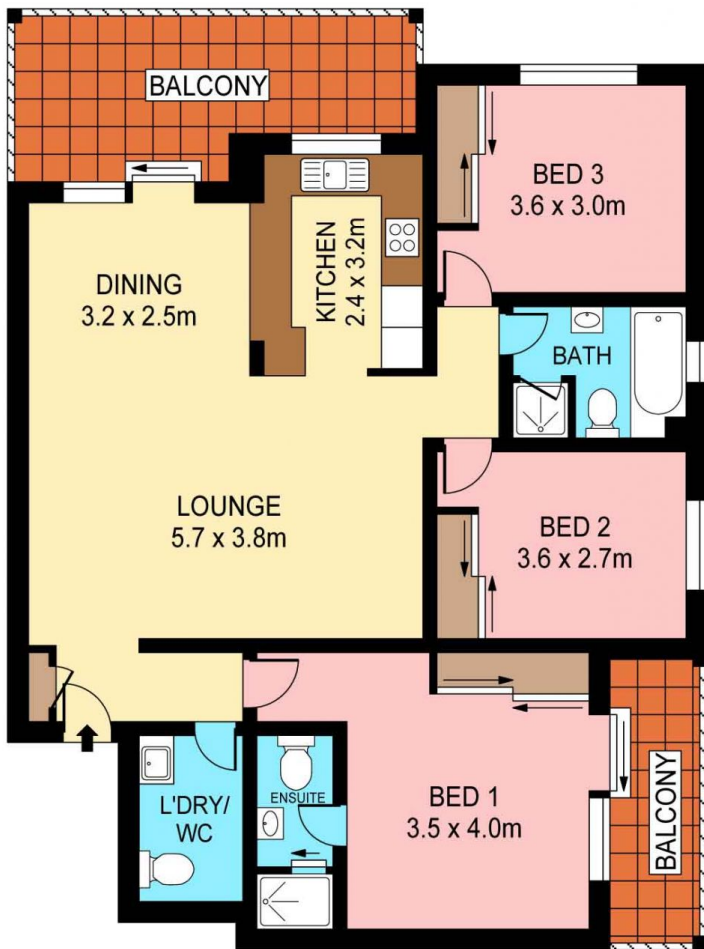
All beds display banks of built in robes, ample room for

**Type** : Apartment  
**Land Size** : 136 sqm  
**View** : <https://www.jreproperty.com.au/sale/nsw/sutherlandland/gyMEA/residential/apartment/7488311>



**Luke Jeffree**  
**02 9540 2222**

[For full version visit the website](https://www.jreproperty.com.au)



**FIRST FLOOR**



Plans shown are for presentation purposes only and are not part of any legal document or title. They are subject to errors, omissions, inaccuracies and should not be used as a sole and accurate reference. Interested parties should make their own inquiries using independent sources. Ref. No. 10791

