



215 Gymea Bay Road GYMEA BAY NSW

4 2 4

Presenting a fantastic entry point into a desirable enclave, this substantial home with cottage appeal offers ample space for the family to grow. Expanded over the years, the two level home displays multiple living areas, a flexible floor plan and well maintained gardens with private rear yard. Full of natural light, enjoying a northerly aspect, its perfectly located just steps to the local school and bus and close by village shops and train.

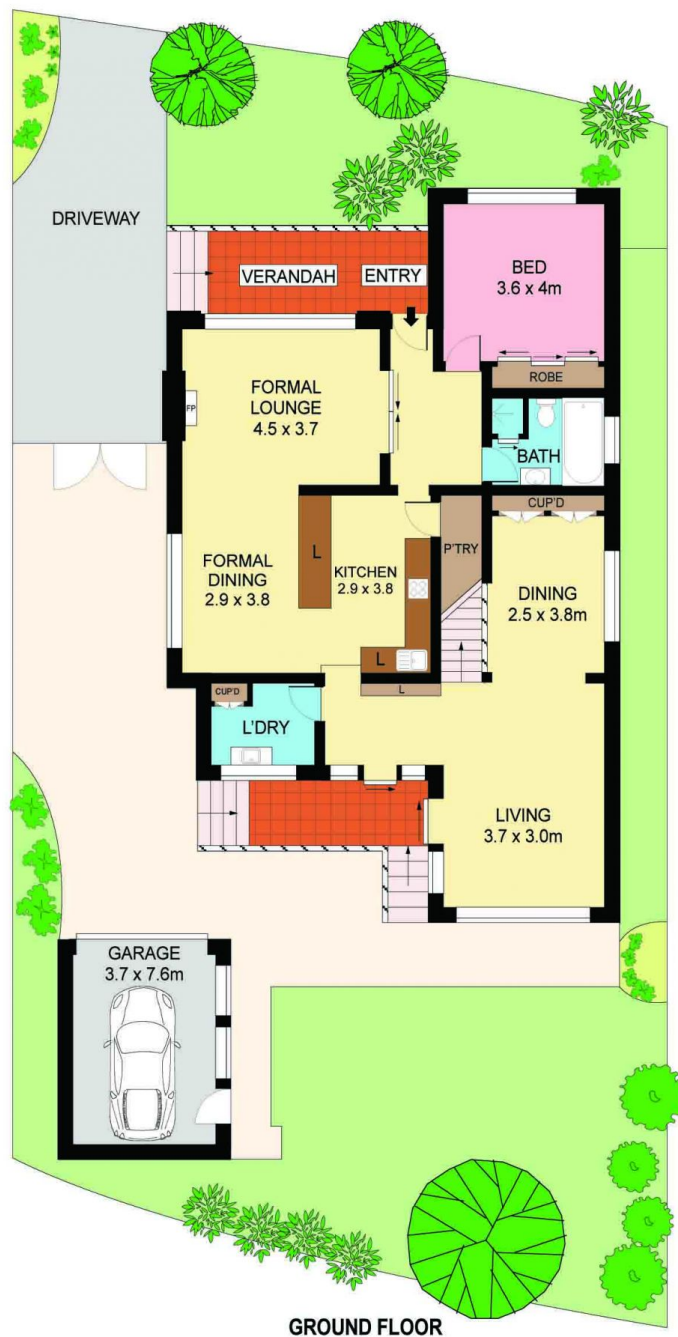
Charming timber floors, high ceilings, crystal lighting and wood fire
Generous formal lounge and dining, large eat in neat & tidy kitchen
Family living/games room, covered terrace overlooks private yard

[For full version visit the website](https://www.jreproperty.com.au)

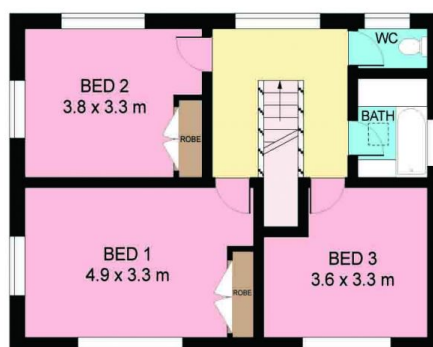
Type : House
Land Size : 575 sqm
View : <https://www.jreproperty.com.au/sale/nsw/sutherland/gymea-bay/residential/house/7488313>



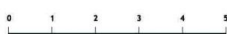
Luke Jeffree
02 9540 2222



GROUND FLOOR



FIRST FLOOR



Plans shown are for presentation purposes only and are not part of any legal document or title. They are subject to errors, omissions, inaccuracies and should not be used as a sole and accurate reference. Interested parties should make their own inquiries using independent sources.

