



**1/616-618 Princes Highway (access via Flora Street)
KIRRAWEE NSW**

2 **1** **1**

Embrace easy care, convenient living in this stylish apartment, located in a modern security complex just footsteps from Kirrawees vibrant hub. Appealing interiors are spacious and light, expanding onto a wide alfresco deck with elevated district views.

Boasting desirable rear street access and ample street parking it offers an attractive entry level opportunity or excellent investment.

Stylish timber floors, generous open plan lounge and dining

Appealing modern kitchen, stainless appliances & ample storage

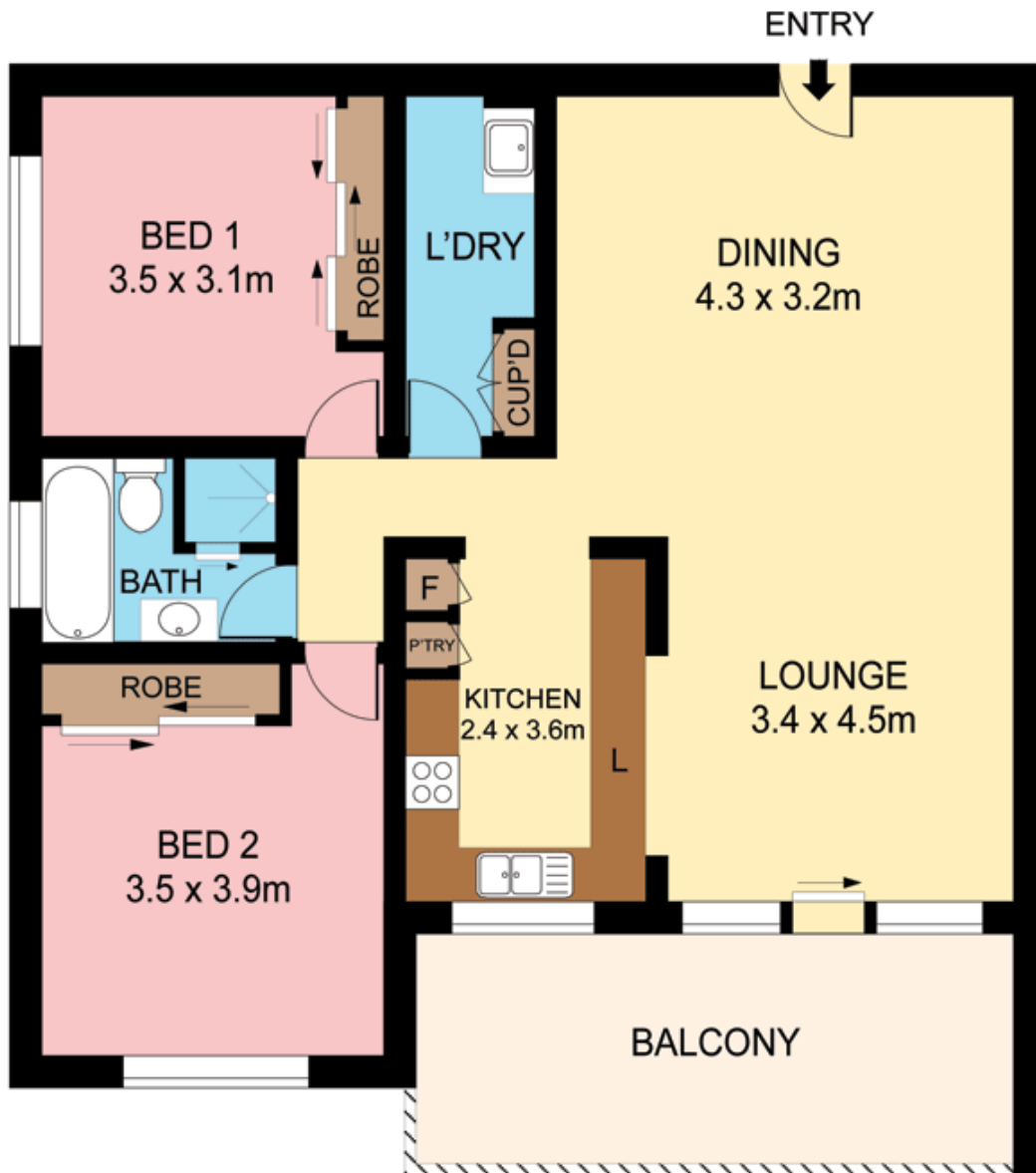
Two double sized bedrooms both enjoy built in robes

[For full version visit the website](https://www.jreproperty.com.au)

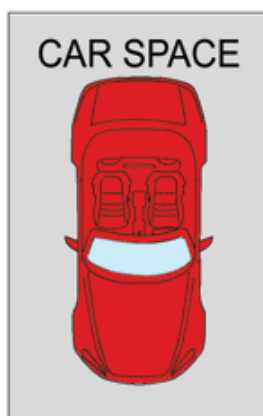
Type : Apartment
Building Size : 111 sqm
View : <https://www.jreproperty.com.au/sale/nsw/sutherland/kirrawee/residential/apartment/7488314>



Luke Jeffree
02 9540 2222



RAISED GROUND FLOOR



Plans shown are for presentation purposes only and are not part of any legal document or title. They are subject to errors, omissions, inaccuracies and should not be used as a sole and accurate reference. Interested parties should make their own inquiries using independent sources.