



30 Huskisson Street GYMEA BAY NSW

4 🏠 2 🚗 1 🚗

Occupying a desirable elevated position with a tranquil outlook from each level, this charming home presents an idyllic lifestyle of peace and privacy. Perfectly designed for a growing family, it is the ideal entertainers retreat, with dual-level living and alfresco areas capturing the beautiful vista from the front and providing a satisfying sense of seclusion at the rear. Ideally located, its a walk to schools, shops and transport.

Type : House
Land Size : 583 sqm
View : <https://www.jreproperty.com.au/sale/nsw/sutherland/gymea-bay/residential/house/7488318>

Enjoy extended picturesque views over beautiful native bushland
 Rumpus/family room on entry level with bar and underfloor heating
 Upstairs casual living/dining opens to a sunny alfresco terrace

[For full version visit the website](https://www.jreproperty.com.au)



Luke Jeffree
02 9540 2222



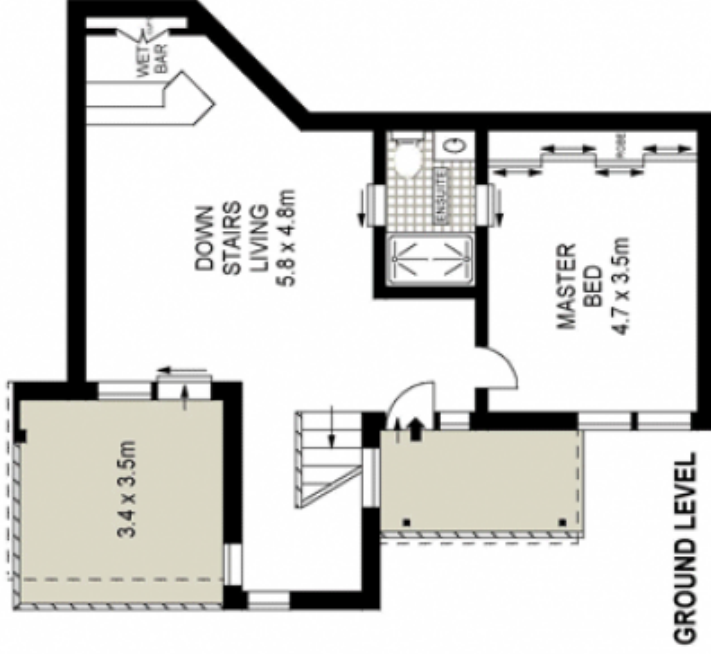
SITE PLAN (NOT TO SCALE)



LEVEL ONE



PLANS SHOWN ONLY INDICATIVE OF LAYOUT. DIMENSIONS ARE APPROXIMATE.



GROUND LEVEL

