



12/15-17 Koorabel Avenue GYMEA NSW

2 1 2

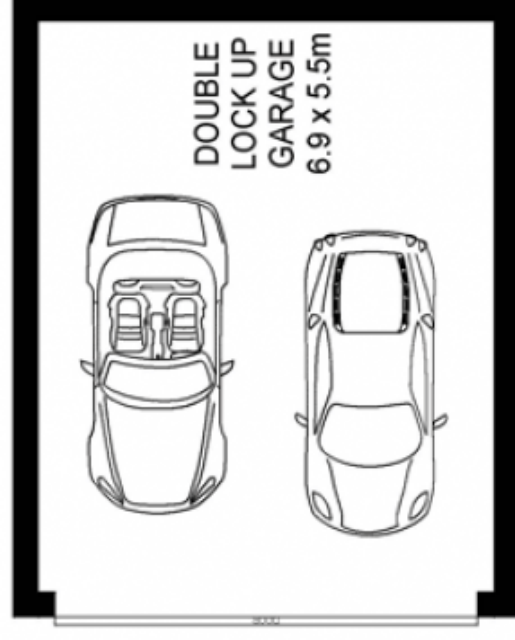
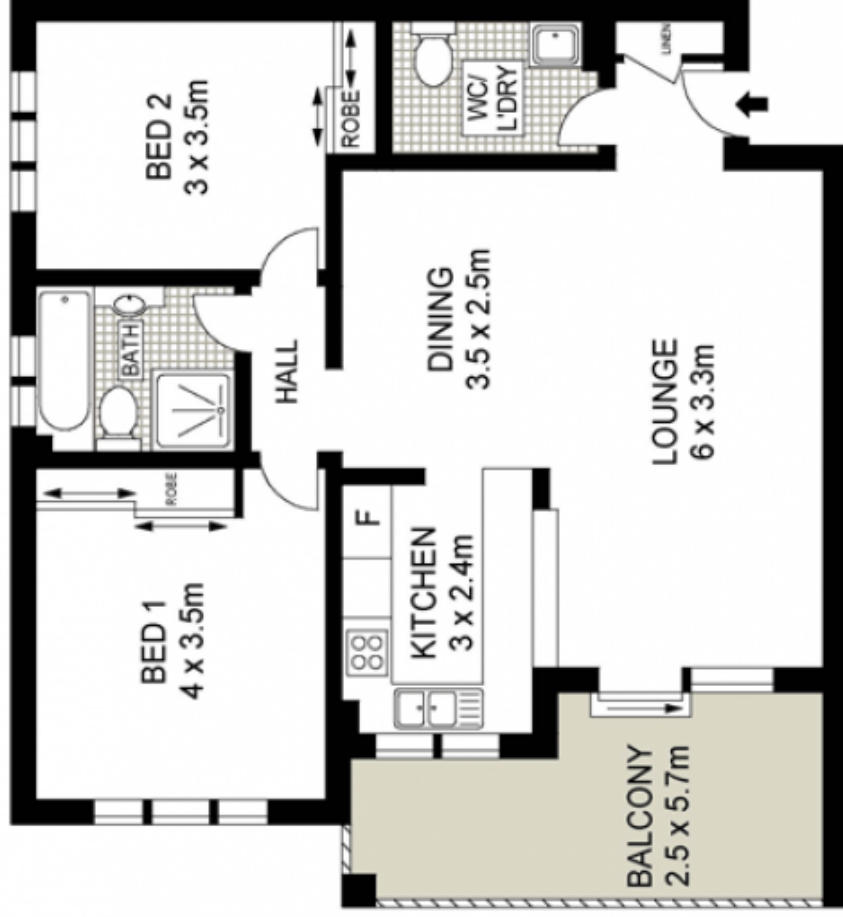
Seize this unique opportunity to purchase a terrific top floor apartment. Spacious, bright & contemporary open plan design will appeal to both investors & first home buyers alike. Sensational size balcony, along with generous size bedrooms plus an oversize double lock up garage would suggest this could be Gymeas Best apartment.

Type : Unit
Building Size : 128 sqm
View : <https://www.jreproperty.com.au/sale/nsw/sutherland/gymea/residential/unit/7488325>

Modern kitchen with plenty of cupboard & bench space
 Fully tiled bathroom plus second toilet
 Air-con, gas cooking & heating plus down lights



Luke Jeffree
02 9540 2222



PLANS SHOWN ONLY INDICATIVE OF LAYOUT. DIMENSIONS ARE APPROXIMATE.



12/15-17 KOORABEL AVENUE

GYMEA