



6/46-48 Talara Road GYMEA NSW

2 1 2

Positioned for a lifestyle of peace, convenience and comfort, this well presented modern apartment offers a generous floor plan with sweeping living spaces displaying a desirable indoor/outdoor flow. Inviting, light filled interiors are enhanced by high ceilings and abundant glass capturing the pleasing leafy outlook. Tightly held, set at the end of a quiet no-through street its a quick stroll to village shops, cafes and rail.

Open plan living offers a versatile layout, spacious defined dining

Exceptional alfresco deck, modern kitchen with long breakfast bar

Two bedrooms positioned for privacy each have built in robes

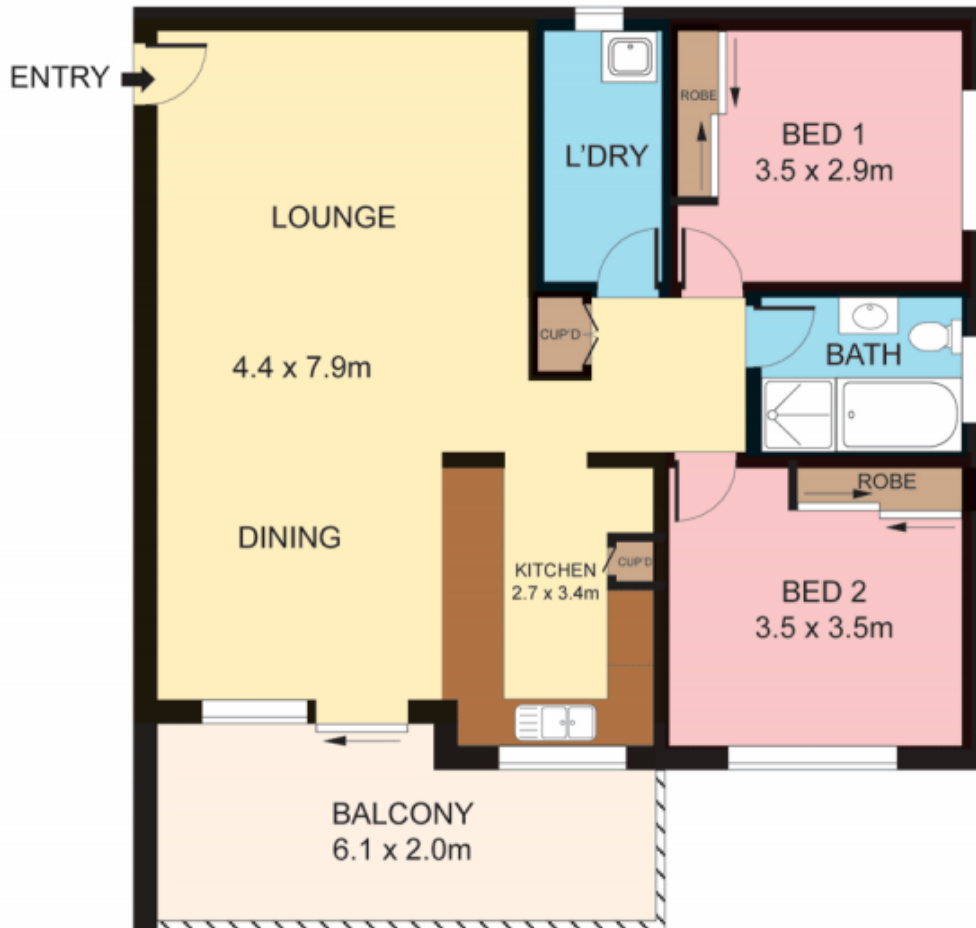
Type : Apartment

View : <https://www.jreproperty.com.au/sale/nsw/sutherland/gymea/residential/apartment/7488327>

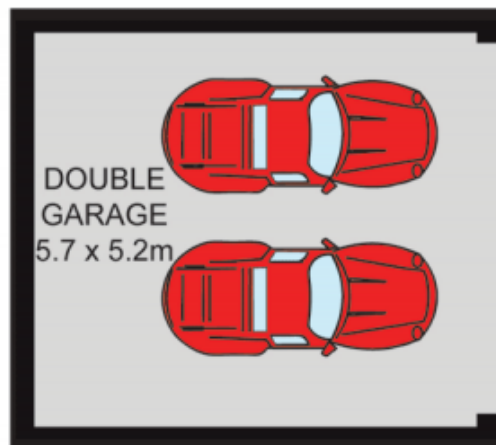


Luke Jeffree
02 9540 2222

[For full version visit the website](https://www.jreproperty.com.au)



FIRST FLOOR



Plans shown are for presentation purposes only and are not part of any legal document or title. They are subject to errors, omissions, inaccuracies and should not be used as a sole and accurate reference. Interested parties should make their own inquiries using independent sources.