

25 Vernon Avenue GYMEA BAY NSW

4 2 2

This unique family home displays a stylish aesthetic with soaring timber clad pitched ceilings and walls of glass capturing the tranquil beauty of the superb leafy surrounds. Enhanced for a spectacular lifestyle, enjoy the private courtyard with day bed and spa or entertain in style on the broad timber deck.

Spacious living & dining, wood fire, conservatory style playroom

Large timber bi-folds open to the striking alfresco deck and views

Designer galley style Caesarstone kitchen with gas cooktop, air

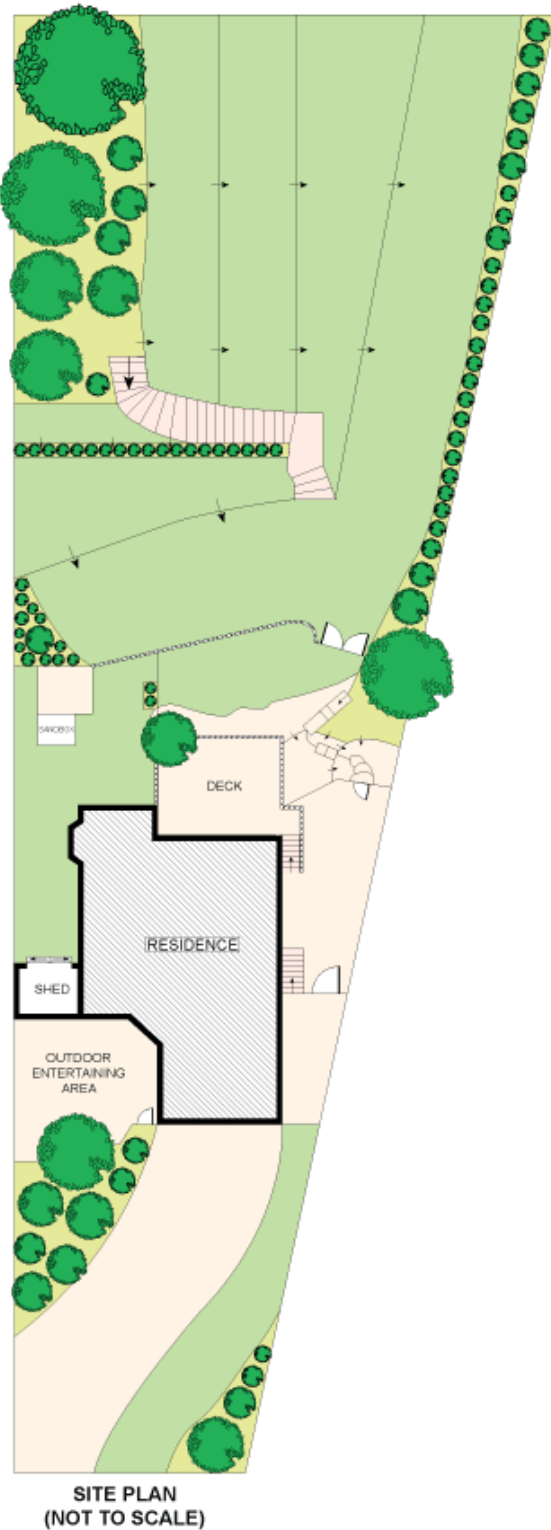
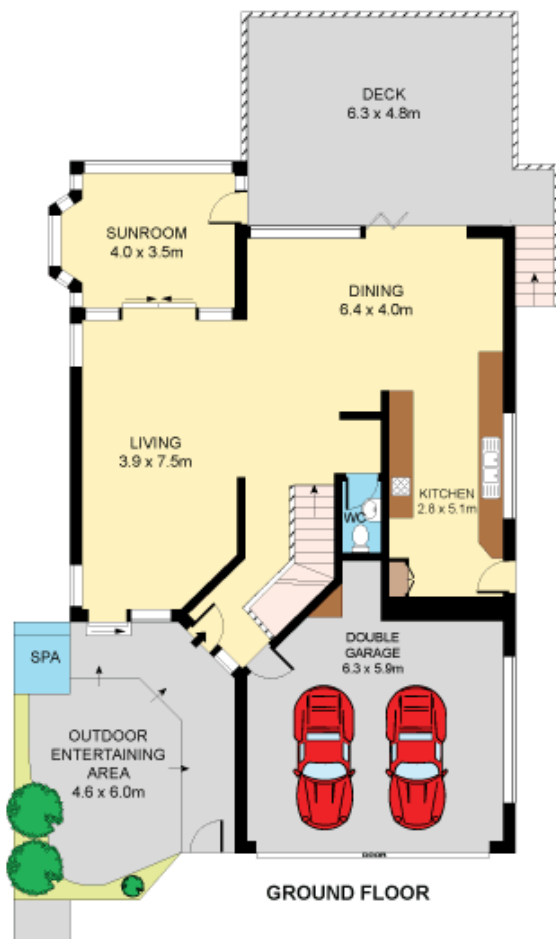
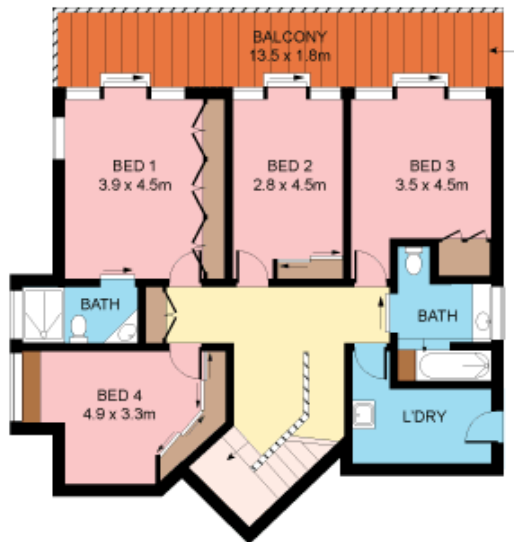
4 large beds include master with ensuite, 3 open to private deck

Type : House
Price : \$ 1,020,000
Land Size : 1719 sqm
View : <https://www.jreproperty.com.au/sale/nsw/sutherlandland/gymea-bay/residential/house/7488329>



Luke Jeffree
02 9540 2222

[For full version visit the website](https://www.jreproperty.com.au)



Plans shown are for presentation purposes only and are not part of any legal document or title. They are subject to errors, omissions, inaccuracies and should not be used as a sole and accurate reference. Interested parties should make their own inquiries using independent sources.

25 VERNON AVENUE

GYMEA BAY

